

14 2641 Whistler Road, Whistler

\$2,499,000



A perfect weekend retreat or full-time residence, this 3-bedroom plus loft Powderwood townhome (end unit) is located in a quiet sought-after neighbourhood. With a vaulted ceiling and sunny private yard surrounded by trees, this home is in move-in condition with a clean slate for decorating or remodeling. Park your vehicles in a 2-car garage and make the most of Whistler's lifestyle with a "ski home" trail around the corner. Enjoy easy access to adventures and amenities with the Creekside base, Valley Trail, tennis courts and 3 swimming lakes all within short walking or biking distance. Ownership includes access to parking in Delta Village Inn and Suites in Whistler Village.

KEY INFORMATION

MLS® R2846575

Residential Attached

Nordic

3 Bedrooms

2 Bathrooms

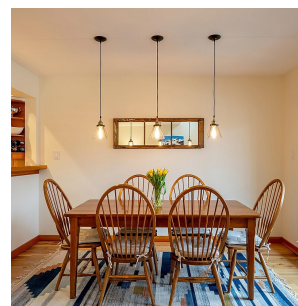
1,604 SF

FEATURES

Year Built: 1997

Views: Valley Mountains

Listed By: Whistler Real Estate Company Limited



rennie