

1403 E 28th Avenue, Vancouver

\$1,249,000



LOCATION LOCATION LOCATION!

KINGCREST ESTATES is conveniently located at 28th and Knight, providing an ideal setting for small families! Quiet inner courtyard exposure coupled with the best "duplex-like unit" in the complex makes this a winner! Spacious open concept living-dining-great room space with extra high ceilings. The top floor has 2 bedrooms with vaulted ceilings and a functional jack-and-jill ensuite bathroom. The entry level has a perfect guest suite with a 3 piece bath and the LARGE ATTACHED GARAGE with its own entrance provides room for parking. Walking distance to Save-On-Foods, Vancouver Public Library, and Lord Selkirk Elementary School! Great community and neighbourhood makes this perfect fit for the growing family!

KEY INFORMATION

MLS® R2846957

Residential Attached

Knight

3 Bedrooms

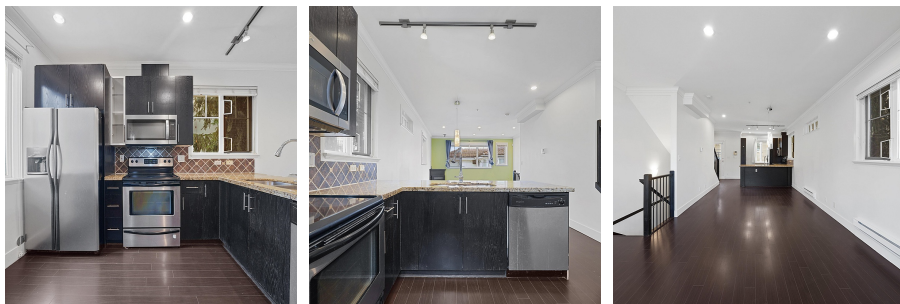
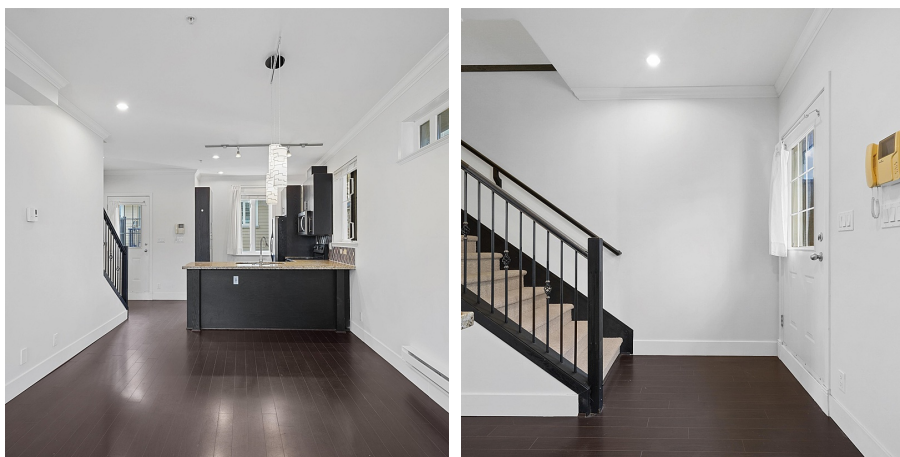
2 Bathrooms

1,231 SF

FEATURES

Year Built: 2007

Listed By: Sutton Group - 1st West Realty



rennie