

1733 Hie Avenue, Coquitlam

\$2,200,000



LAND ASSEMBLY INVESTMENT opportunity for BIG development SITE flat Location .
DEVELOPERS INVESTORS ALERT. Possible for rezoning. The site is designated for medium density - RM 2 and RM 3, permitting construction of multi-storey residential apartment buildings. Gross floor area of 1.85 (buyer to verify), property was originally 4 - 3 bed suites with 4 Kitchens. It is in the prime location of Maillardville, Coquitlam, just minutes away from Highway #1, Lougheed Highway, transit, supermarkets, shopping, and recreation.

KEY INFORMATION

MLS® R2847370

Multifamily

Maillardville

12 Bedrooms

4 Bathrooms

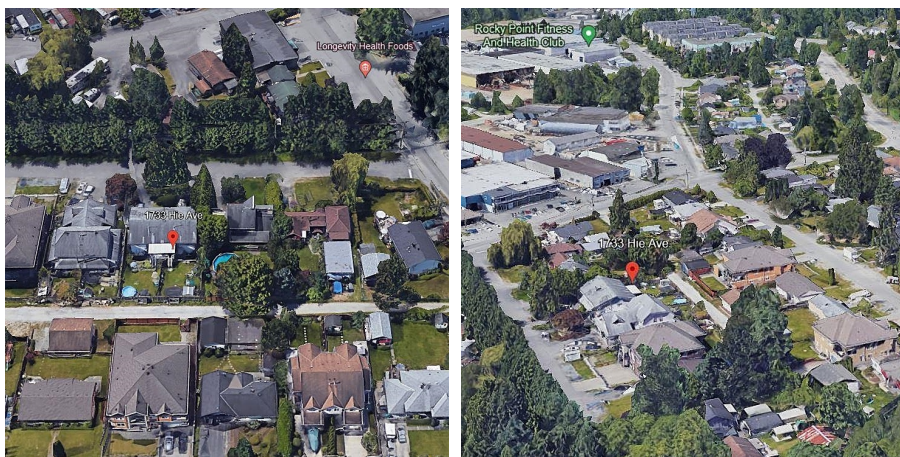
4,000 SF

8,052 SF Lot

FEATURES

Year Built: 1972

Listed By: RE/MAX Crest Realty



rennie