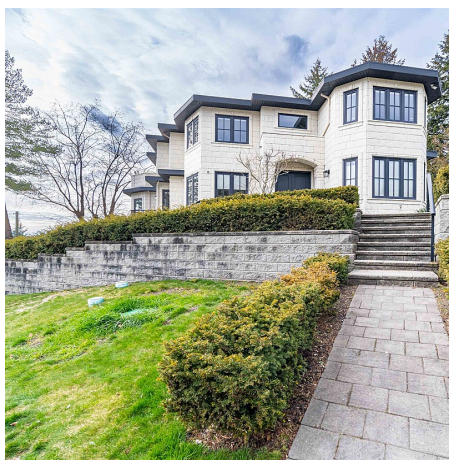


8579 Gilley Avenue, Burnaby

\$2,998,000



This beautiful 3 level house located in South Slope Burnaby with gorgeous mountain and river view. 6 Bedrooms and 7 Bathrooms. Basement can accommodate families with 2 bedrooms with separate entrance and laundry. Huge kitchen for family gatherings. This house has solar powered system, the whole house is fit with German windows. The sewer system is drained by gravity, no sump pump. The owner spent \$100,000 for the exterior stone cladding. Attached Double garage is equipped with electric car charger. Easy access to Richmond and Airport. Close to Metrotown Shopping center and Crystal Mall. School catchment, Nelson Elementary and Burnaby south secondary. Open house: May 4th, Sat, 2-4PM.

KEY INFORMATION

MLS® R2847573

Residential Detached

South Slope

6 Bedrooms

7 Bathrooms

4,800 SF

8,101 SF Lot

FEATURES

Year Built: 2018

Views: CITY, MOUNTAIN, RIVER

Listed By: RE/MAX Crest Realty

rennie