

# 2279 Harper Drive, Abbotsford

\$1,199,900



A well maintained house on a huge lot in the popular McMillan area. It is located on a quiet cul-de-sac. Close to McMillan Elementary School, Fraser Middle School and Yale Secondary. Easy Access to Highway No.1.

## KEY INFORMATION

MLS® R2848636

Residential Detached

Abbotsford East

6 Bedrooms

2 Bathrooms

2,735 SF

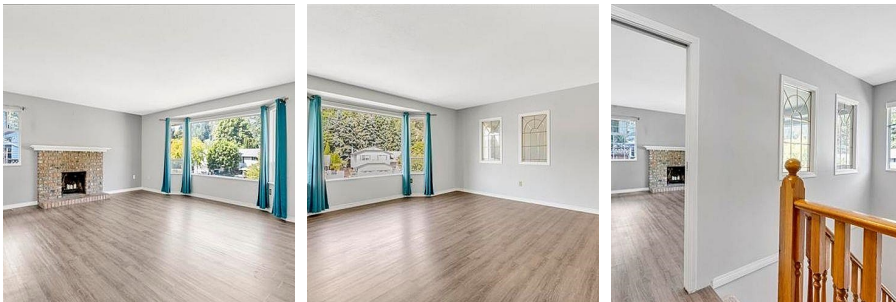
8,383 SF Lot

## FEATURES

Year Built: 1988

Views: MOUNTAINS

Listed By: Parallel 49 Realty



rennie