

# 13241 15a Avenue, Surrey

\$3,488,000



Luxurious Living - Prime Ocean Park Location. Shows new! Superior detailed finish throughout 6,136 sq. ft. plan, 6 bedroom and 7 bath three level plan exudes quality. Main floor 10' and vaulted ceilings, floor to ceiling windows, brushed hardwood floors, office, formal dining room, butler's pantry, wok kitchen, chef's dream custom kitchen, high-end appliances, walks out to entertainment size double sundeck, guest bedroom. Upper-level stunning primary suite, plus 3 ensuited secondary bedrooms. Lower-level walk out basement, rec room, plumbed bar, wine cellar, media room, sauna, gym, and 6th ensuited bedroom. Sunny and private 7,979 sq. ft. lot, back lane access. Ray Shepherd and Elgin Schools.

## KEY INFORMATION

MLS® R2848377

Residential Detached

Crescent Beach

6 Bedrooms

7 Bathrooms

6,016 SF

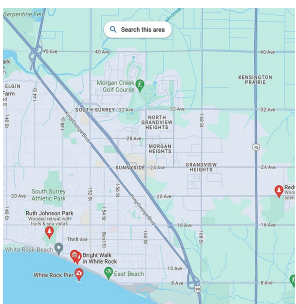
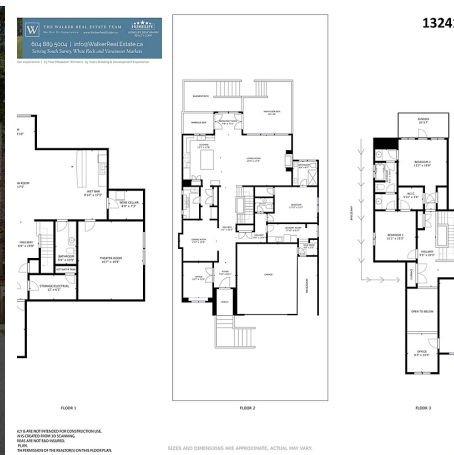
7,903 SF Lot

## FEATURES

Year Built: 2015

Views: North Back Yard - Lane Access

Listed By: Homelife Benchmark Realty Corp.



Address	Price	Address	Price	Address	Price
13181	1,508	13201	1,820	13221	1,820
13182	1,508	13202	1,820	13222	1,820
13183	1,508	13203	1,820	13223	1,820
13184	1,508	13204	1,820	13224	1,820
13185	1,508	13205	1,820	13225	1,820
13186	1,508	13206	1,820	13226	1,820
13187	1,508	13207	1,820	13227	1,820
13188	1,508	13208	1,820	13228	1,820
13189	1,508	13209	1,820	13229	1,820
13190	1,508	13210	1,820	13230	1,820
13191	1,508	13211	1,820	13231	1,820
13192	1,508	13212	1,820	13232	1,820
13193	1,508	13213	1,820	13233	1,820
13194	1,508	13214	1,820	13234	1,820
13195	1,508	13215	1,820	13235	1,820
13196	1,508	13216	1,820	13236	1,820
13197	1,508	13217	1,820	13237	1,820
13198	1,508	13218	1,820	13238	1,820
13199	1,508	13219	1,820	13239	1,820
13200	1,508	13220	1,820	13240	1,820

