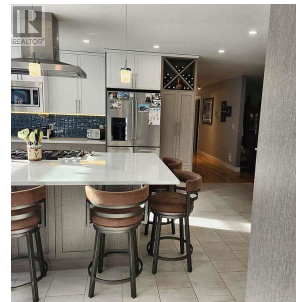
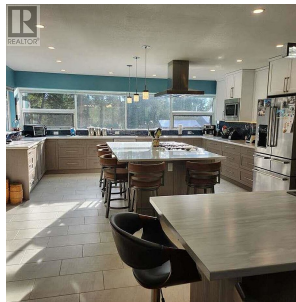
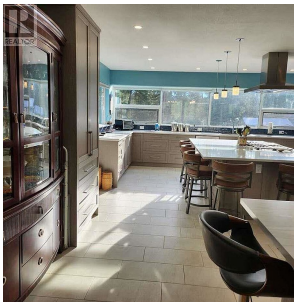


# 4700 Schubert Road, Armstrong

\$1,549,000



For additional information, please click on Brochure button below. 1991 Home on 5.21 Acres in Spallumcheen/Armstrong. Nestled in the serene countryside of Spallumcheen/Armstrong, this expansive home offers a tranquil retreat on a sprawling 5.21-acre property. Built in 1991, this two-level residence boasts 5 bedrooms, 3.5 bathrooms, including a self-contained two-bedroom, one-bathroom basement unregistered suite for added versatility. Situated in an Agricultural Land Reserve (ALR) location, this property ensures the preservation of its natural surroundings by safeguarding against future nearby development. Enjoy the peace of mind knowing that your property perimeter is protected, providing an enduring sense of tranquility. The lush landscape surrounding the home resembles an oasis, with hundreds of tall, meticulously manicured Fir and Pine trees creating a private park-like setting. Whether you're seeking a peaceful sanctuary or an outdoor enthusiast's paradise, this property offers endless opportunities to explore and unwind amidst nature's beauty. Don't miss the chance to own this slice of rural paradise. (id:56120)

## KEY INFORMATION

MLS® 10304469

Residential Detached

Spallumcheen

5 Bedrooms

4 Bathrooms

4,500 SF

226,948 SF Lot

## FEATURES

Year Built: 1991

Listed By: Easy List Realty

rennie