

309 290 Francis Way, New Westminster

\$558,000



Welcome to the "The Grove," a cozy Whistler-style building in the peaceful Victoria Hill neighborhood. This well-maintained home offers stunning views of the Fraser River and Port Mann bridge from the spacious balcony and living room. Inside, you'll find a modern kitchen with quartz countertops and stainless steel appliances that seamlessly connects to the open dining and living area, which boasts 10-foot ceilings and balcony access. The master bedroom is generously sized with its own balcony access and a roomy walk-in closet. Additional storage is available in the laundry room, and the bathroom features a stylish quartz countertop.

KEY INFORMATION

MLS® R2849971

Residential Attached

Fraserview

1 Bedroom

1 Bathroom

647 SF

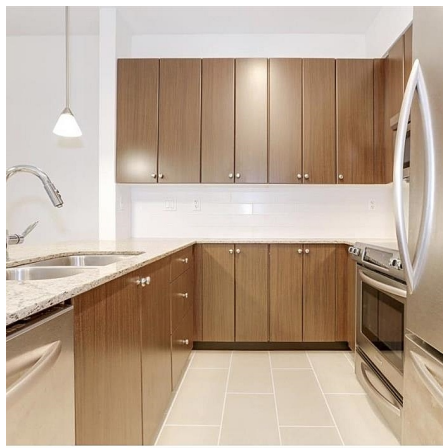
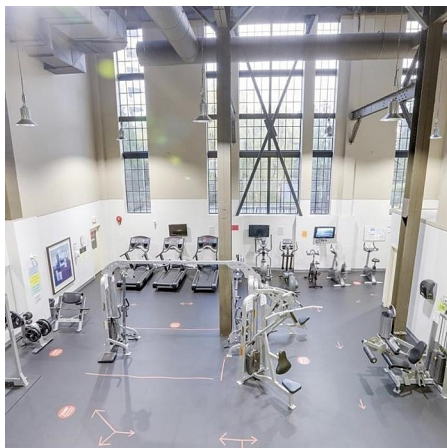
\$380.00 Maintenance Fees

FEATURES

Year Built: 2008

Views: FRASER RIVER

Listed By: Magsen Realty Inc.



rennie