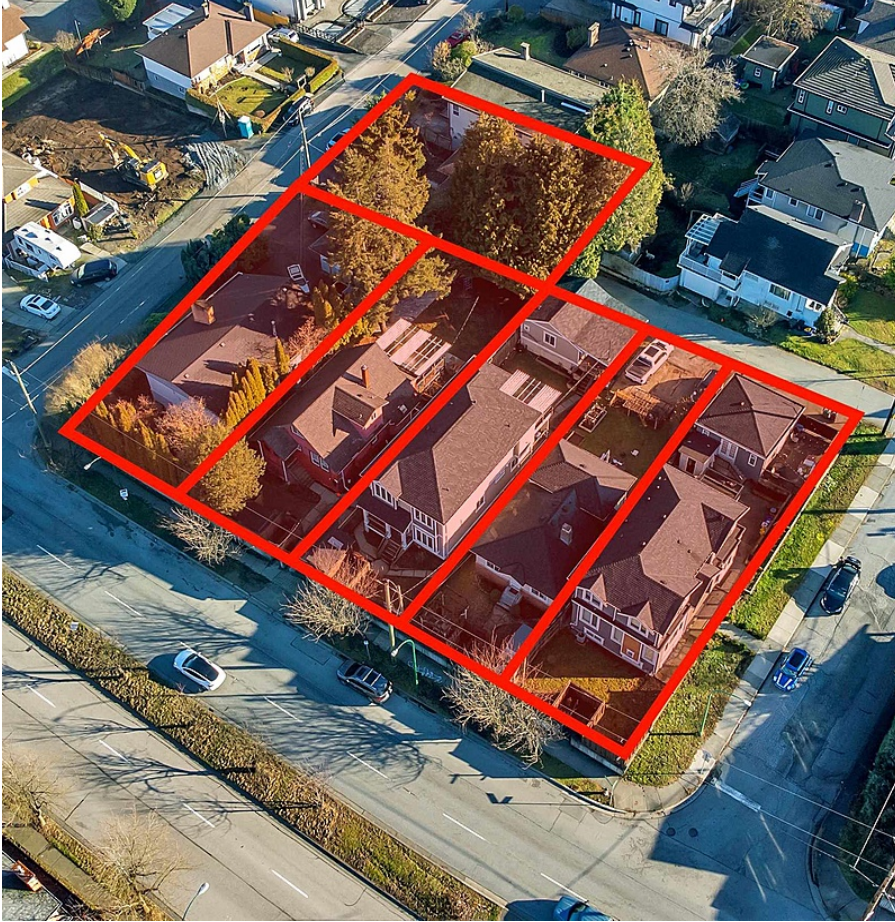


4860 Boundary Road, Burnaby

\$3,398,000



INVEST WITH CONFIDENCE great opportunity to acquire SIX properties fronting along Boundary Road totalling 29,549 Square Feet. Prime location within short distance to parks/trails, community rec centres, both levels of schools, Metrotown/Metropolis shopping and fine dining at various restaurants. Close proximity to Joyce and Patterson Skytrain stations allowing multifamily development potential for up to 3.0 FAR 6-8 stories. Verify at the City of Burnaby. Currently an over 2500 SF custom built home. Pride of Ownership, 5 spacious bedrooms, 5 full bathrooms, living/dining room, gourmet kitchen and fully finished inlaw suite with separate entry. To be sold in conjunction with 3705 Price Street, 4870 Boundary Road, 4850 Boundary Road, 3708 Cardiff Street, 3718 Cardiff Street.

KEY INFORMATION

MLS® R2847701

Residential Detached

Central Park

5 Bedrooms

5 Bathrooms

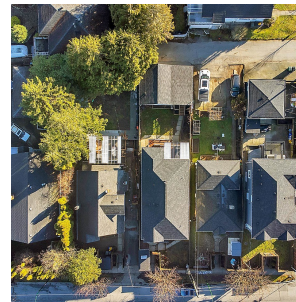
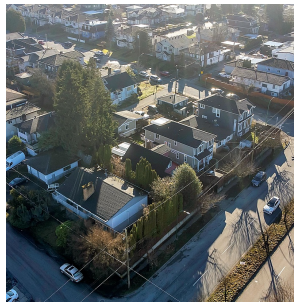
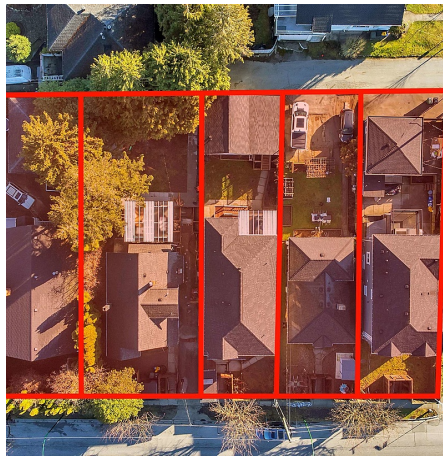
2,541 SF

4,257 SF Lot

FEATURES

Year Built: 2014

Listed By: Century 21 Coastal Realty Ltd.



rennie