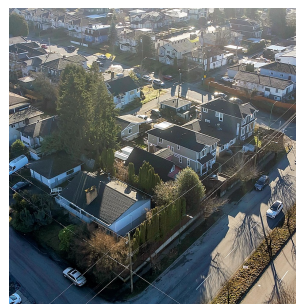
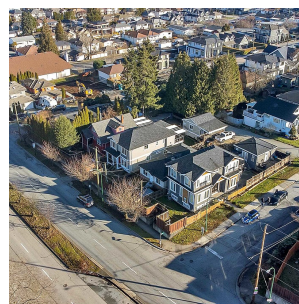
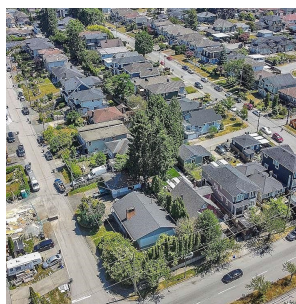
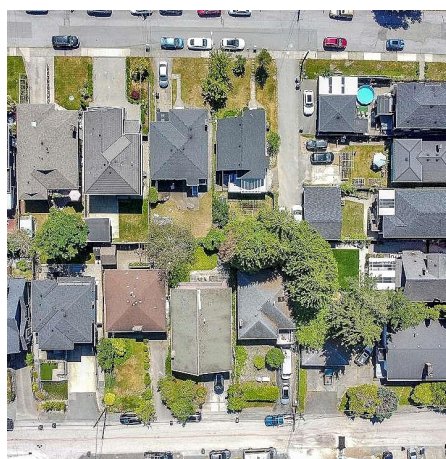
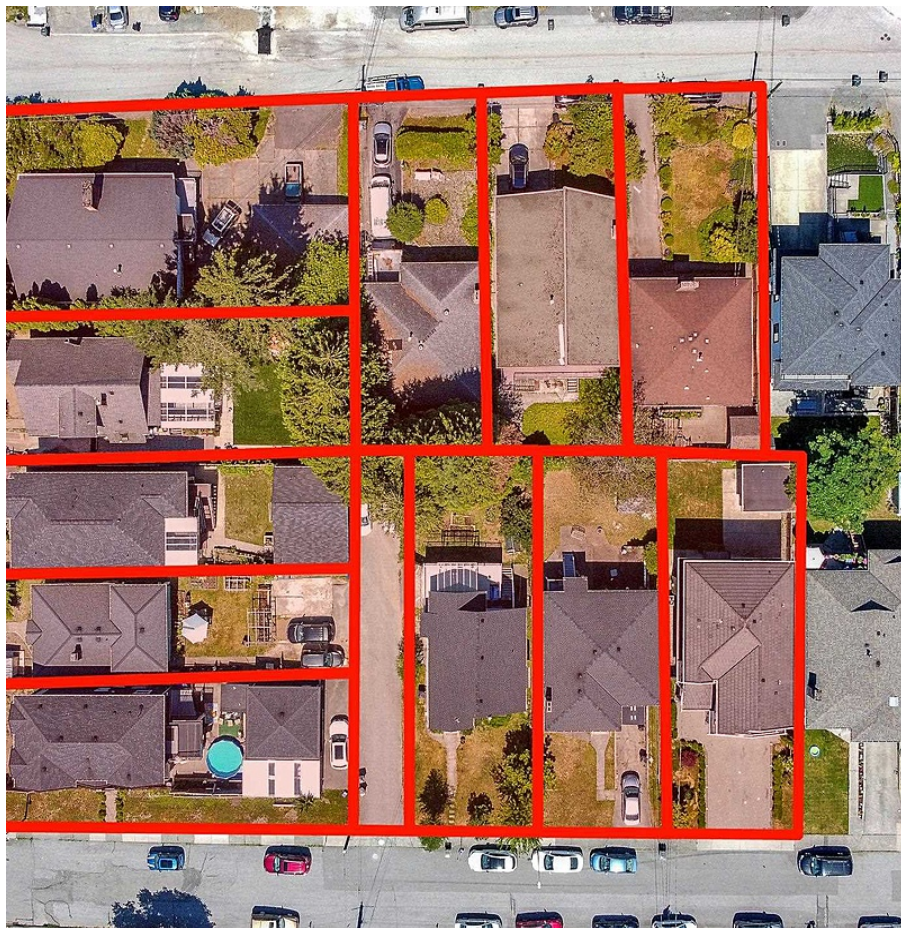


4870 Boundary Road, Burnaby

\$3,398,000



INVEST WITH CONFIDENCE in a rare opportunity to acquire ELEVEN properties along Boundary Road, totalling 49,943 sq ft. This prime location offers easy access to parks, trails, community rec centers, schools, Metrotown/ Metropolis shopping, and fine dining. Situated within Vancouver's Transit Oriented Development area, close to Joyce & Patterson Skytrain stations. In recent events, the City of Burnaby has completely eliminated the FAR limitations. New zoning framework allows various options for development of up to 8 storeys building height with Mountain views! Properties included: 4870 Boundary Rd, 4860 Boundary Rd, 4850 Boundary Rd, 3705 Price St, 3717 Price St, 3723 Price St, 3727 Price St, 3708 Cardiff St, 3718 Cardiff St, 3724 Cardiff St, 3728 Cardiff St.

KEY INFORMATION

MLS® R2847716

Residential Detached

Central Park

4 Bedrooms

0 Bathrooms

1,350 SF

4,224 SF Lot

FEATURES

Year Built: 1948

Listed By: Century 21 Coastal Realty Ltd.

rennie