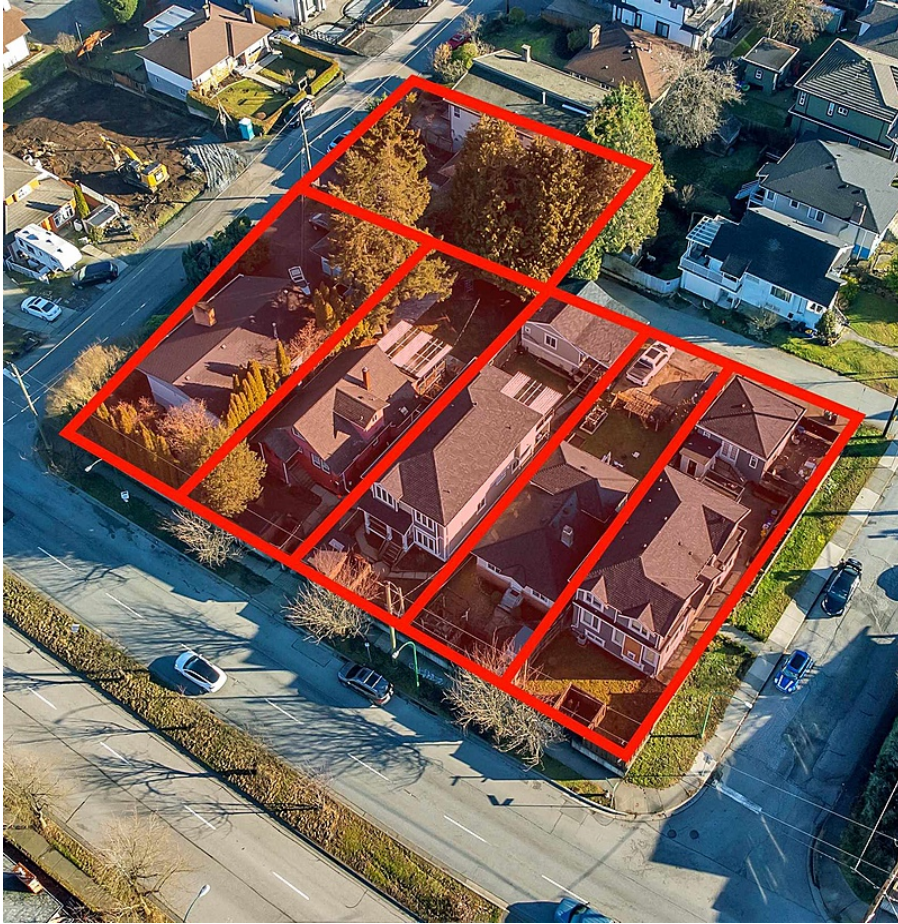


4850 Boundary Road, Burnaby

\$3,398,000



INVEST WITH CONFIDENCE great opportunity to acquire SIX properties fronting along Boundary Road totalling 29,549 Square Feet. Prime location within short distance to parks/trails, community rec centres, both levels of schools, Metrotown/Metropolis shopping and fine dining at various restaurants. Close proximity to Joyce and Patterson Skytrain stations allowing multifamily development potential for up to 3.0 FAR 6-8 stories. Verify at the City of Burnaby. Currently an over 2300 SF fully renovated and modernized home. Pride of Ownership, 5 spacious bedrooms, 3 full bathrooms, fully finished 2 bedroom suite with separate entry. To be sold in conjunction with 3705 Price Street, 4870 Boundary Road, 4860 Boundary Road, 3708 Cardiff Street, 3718 Cardiff Street.

KEY INFORMATION

MLS® R2849058

Residential Detached

Central Park

5 Bedrooms

3 Bathrooms

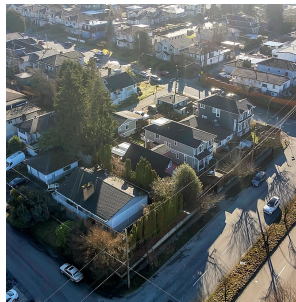
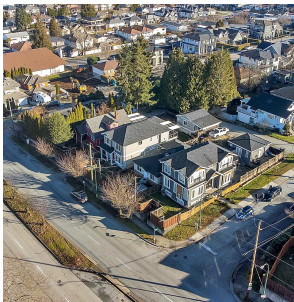
2,359 SF

6,016 SF Lot

FEATURES

Year Built: 1922

Listed By: Century 21 Coastal Realty Ltd.



rennie