

2001 9868 Cameron Street, Burnaby

\$605,000



Step into this contemporary 1-bedroom+DEN, 1-bathroom condo in the vibrant Lougheed neighborhood. The south-facing unit boasts a spacious den, perfect for a home office, and a pocket door offers the flexibility of an ensuite option. The modern kitchen features granite counter tops, stainless appliances, subway back splash, and pendant lights, providing a stylish touch. Entertain on the huge private balcony with courtyard views. Built with concrete by Ledingham McAllister, "The Silhouette" North Tower is just an 8-minute walk to the SkyTrain and close to all amenities, including groceries steps away. Enjoy superb facilities like a gym, clubhouse, and guest suite. The condo includes 1 parking stall and 1 storage locker.

KEY INFORMATION

MLS® R2850515

Residential Attached

Sullivan Heights

1 Bedroom

1 Bathroom

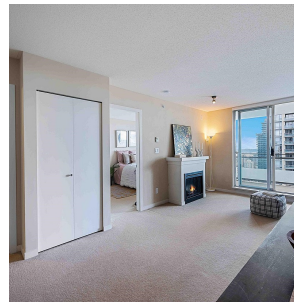
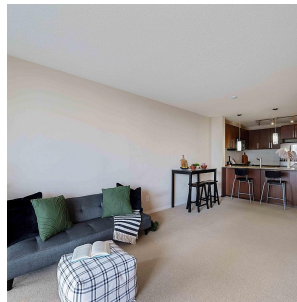
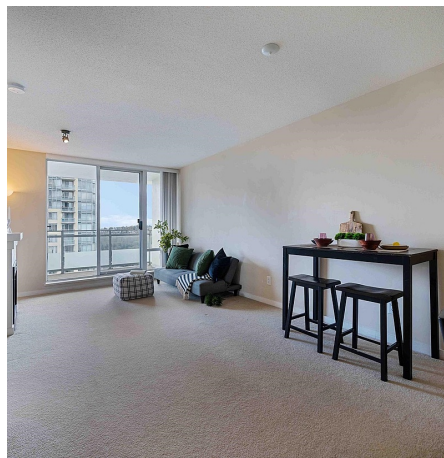
630 SF

\$321.99 Maintenance Fees

FEATURES

Year Built: 2009

Listed By: Sutton Premier Realty



rennie