

9840 Anderson Place, Pemberton

\$599,000



Discover the tranquil beauty of this 5-acre property nestled in a quiet rural subdivision, off the main road, offering an idyllic retreat. With its breath-taking views of Anderson Lake, it presents a delightful spot for nature enthusiasts. Its proximity to the lake is a haven for boating and fishing, only minutes away. The property features a 1100 square foot structure boasting 12 foot ceilings, providing a spacious ambiance. Numerous storage options exist for your convenience, and a cleared build site awaits your dream home. Essential utilities are installed including a buried 1000-gallon cistern with a gravity feed for water supply, and a dedicated septic system for your RV, making it ideal even as you build.

KEY INFORMATION

MLS® R2850597

Residential Detached

Devine

0 Bedrooms

0 Bathrooms

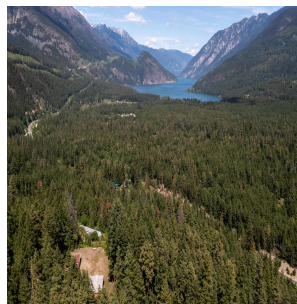
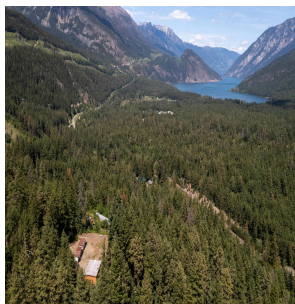
1,036 SF

FEATURES

Year Built: 2009

Views: Anderson Lake Views

Listed By: Whistler Real Estate Company Limited



rennie