

1712 Keats Street, Abbotsford

\$1,300,000



Recently renovated home built in 1969, ideal for investors or those seeking a quarter-acre lot. Zoned RS3-I Infill, it's primed for development—a 2-lot subdivision's minimum requirement. Near Central Abbotsford in Poplar, close to McCallum junction's shopping and dining. Mill Lake Park is a short 10-minute drive away. Exceptional schools include Jackson Elementary, Abbotsford Middle, and Abbotsford Senior Secondary. Enjoy parks like Keats and Kaslo within a 20-minute walk. Convenient transit access and safety facilities nearby. Developer's dream with 77' frontage, 142' depth, renovated home, separate entrance, rough-ins for suite, and potential for two secondary suites.

KEY INFORMATION

MLS® R2849659

Residential Detached

Poplar

6 Bedrooms

3 Bathrooms

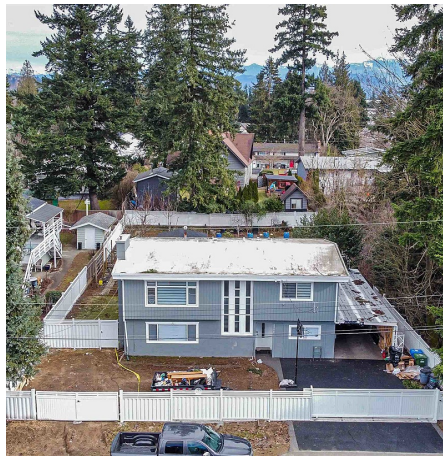
2,281 SF

10,934 SF Lot

FEATURES

Year Built: 1969

Listed By: eXp Realty (Branch)



rennie