

210a 2036 London Lane, Whistler

\$215,000



Welcome to Legends #210A, a beautifully appointed, fully furnished and equipped 1-bedroom resort home with a cozy mountain feel. One of the largest one-bedroom floor plans, this unit is ideally placed on the sunny west side, ensuring ample natural light and space. You can leave your car in the secure underground parking and easily access world-class skiing, snowboarding, biking, and hiking from the Creekside Gondola, or if you prefer to relax, enjoy the fabulous amenities such as a luxurious heated outdoor pool, two hot tubs, outdoor BBQ, fitness center, and games/media room. This year, this rotation provides two weeks during Christmas Holidays. Don't miss your chance to own a slice of Whistler's charm at Legends.

KEY INFORMATION

MLS® R2850761

Residential Attached

Whistler Creek

1 Bedroom

1 Bathroom

687 SF

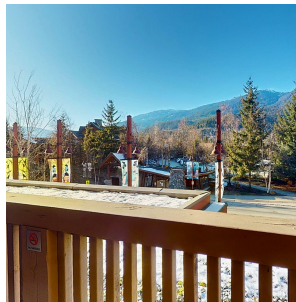
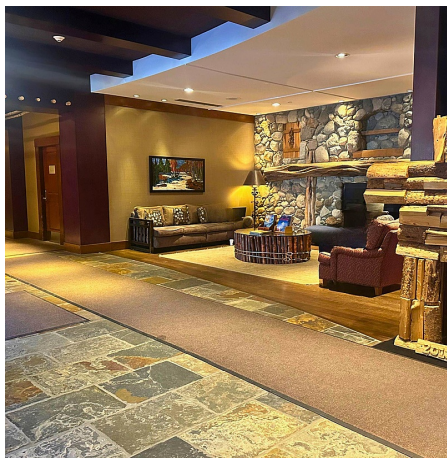
\$528.50 Maintenance Fees

FEATURES

Year Built: 2001

Views: MOUNTAIN

Listed By: RE/MAX Sea to Sky Real Estate



rennie