

313 23200 Gilley Road, Richmond

\$589,900



BUY NOW WITH ONLY 10% DOWN. GET EITHER 5K, 8K OR 10K OFF OF YOUR PURCHASE. Hamilton Village - West: This 1 Bed and Den 646 sqft unit enjoys a west facing patio. The East and West, mixed-use buildings, share two indoor amenity spaces, beautiful gardens, a huge playground and an underbuilding parkade. Live at the center of it all and come home to stainless steel appliances, sleek modern interiors in two designer colour schemes. Display suite is located across the street at 105 -23233 Gilley Road. Open Saturdays and Sundays 2-4 PM. *Please note photos are of the 2 bedroom display suite

KEY INFORMATION

MLS® R2851221

Residential Attached

Hamilton

1 Bedroom

1 Bathroom

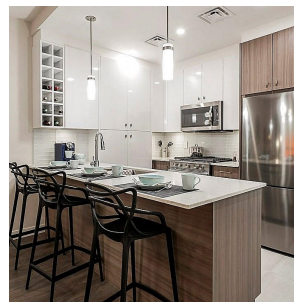
646 SF

\$355.09 Maintenance Fees

FEATURES

Year Built: 2024

Listed By: RE/MAX Westcoast



rennie