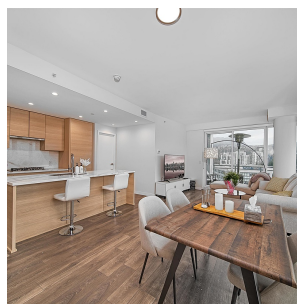
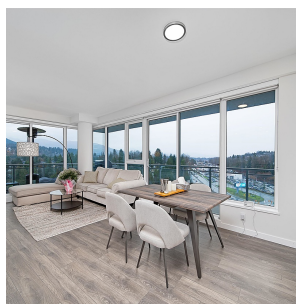
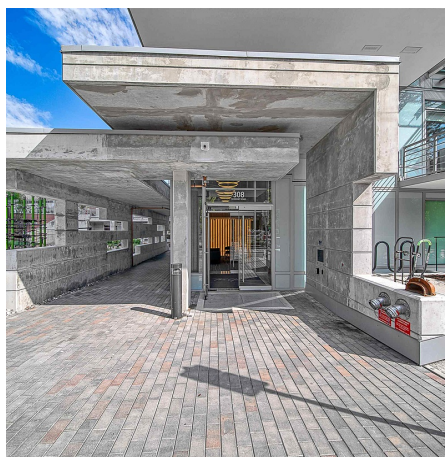
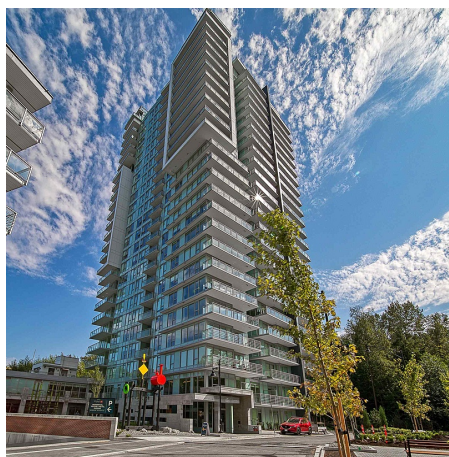


1602 308 Morrissey Road, Port Moody

\$1,075,000



Near New NO GST. The Grande , A luxury Solid reinforced concrete construction . This XL 2 bed plus den corner unit has almost 1100 Sq Ft indoor area , north east facing plus 145 sq ft covered patio . Energy efficient air conditioning & heating.9 foot ceiling throughout living spaces create a grand and open feeling. Laminate flooring throughout the entire unit. Equipped with integrated Blomberg Fridge, Fulgor Milano Gas Cooktop, slideout Faber Cristal hood fan, integrated Blomberg Dishwasher, Heated bathroom floors, frameless glass and showers. EV parking spot and one storage locker.Amenities including outdoor BBQ & dining terrace, children's playroom, theatre room, fitness club, steam and sauna, guest suite, outdoor pool, hot tub and community garden.

KEY INFORMATION

MLS® R2852201

Residential Attached

Port Moody Centre

2 Bedrooms

2 Bathrooms

1,095 SF

\$376.00 Maintenance Fees

FEATURES

Year Built: 2022

Views: North Mountains & City

Listed By: Royal LePage Sussex

rennie