

# 1615 Chippendale Road, West Vancouver

\$4,998,000



Perched majestically in prestigious Canterbury, West Vancouver, this meticulously crafted luxury residence spans ~11,000 sqft of land with ~5,000 sqft of living space across 3 floors. Revel in breathtaking south-facing ocean & downtown vistas. Boasting 6 beds & 5 baths, including a sumptuous master suite with a fireplace & private deck. The grand foyer welcomes with a feature staircase, leading to spacious living areas including a gourmet kitchen & dining room. Enjoy A/C, meticulous landscaping, & elegant design details. Close proximity to top-ranking schools, amenities, & recreational facilities. Experience unparalleled luxury & indulge in mesmerizing views from this distinguished estate. Live where luxury meets lifestyle. Schedule your viewing today! OPEN HOUSE: SUNDAY, APRIL 14th: 2-4

## KEY INFORMATION

MLS® R2852802

Residential Detached

Canterbury

6 Bedrooms

5 Bathrooms

5,484 SF

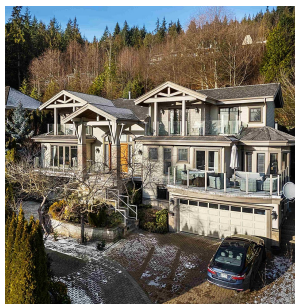
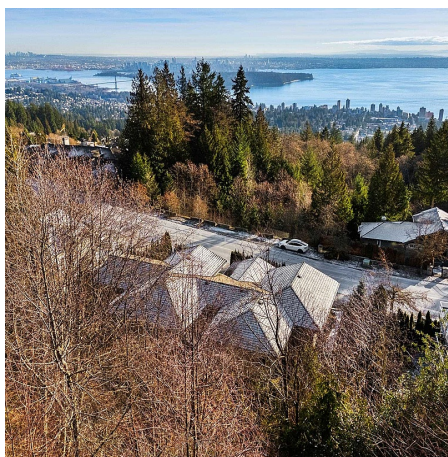
10,882 SF Lot

## FEATURES

Year Built: 2004

Views: Ocean & City

Listed By: Royal Pacific Realty Corp.



rennie