

11070 Wren Crescent, Surrey

\$1,349,777



Well maintained Nice clean 3 bed & Den, RANCHER. Perfect for someone who doesn't want to deal with stairs. Enjoy the cozy gas fireplace in the Large living room. Lots of light comes through the large windows. Updated windows, blinds, paint, roof, and furnace. Hardwood flooring throughout Detached 19x 23.5 sf garage plus 26'6x 16'7 carport. Lost of parking. Flat Rectangular lot with wide frontage of 66 sq. ft. in the most desirable up and coming area of popular Birdland. Large fenced backyard. Close to all the amenities. shopping, restaurants, good schools, Riverdale Elementary School, Guildford Park Secondary, transit and Hwy 1. Lots of New homes are being built on this peaceful street. Easy to Show!

KEY INFORMATION

MLS® R2852664

Residential Detached

Bolivar Heights

3 Bedrooms

1 Bathroom

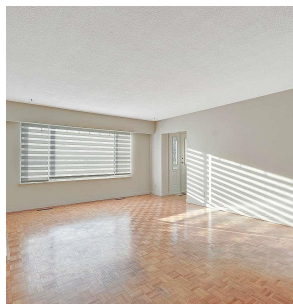
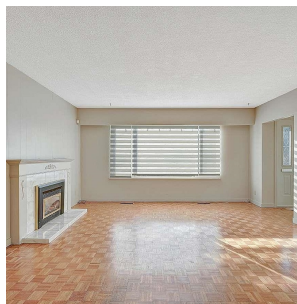
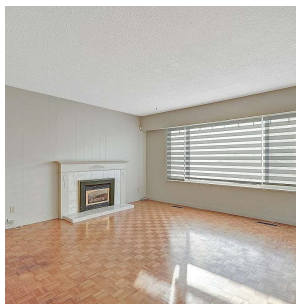
1,239 SF

7,279 SF Lot

FEATURES

Year Built: 1958

Listed By: Sutton Group-West Coast Realty (Surrey/120)



rennie