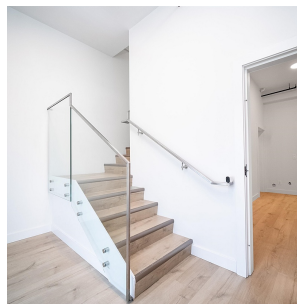
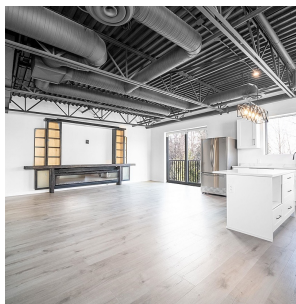


301 12835 Lilley Drive, Maple Ridge

\$1,599,000



Introducing North Kanaka Workspaces: a unique opportunity blending modern living with industrial functionality. This exceptional end unit spans 3,340 sq ft, featuring a rare live-work setup. Above one of the industrial bay doors lies a brand-new, 1,100-square-foot suite with 2 bedrooms and 2 baths, adorned with high-end finishes, backing onto a greenbelt for unparalleled comfort and mountain views. The warehouse portion covers 2,240 sq ft, providing ample space for business operations. Equipped with 600V, 100amp, 3-phase power, separate meters for the warehouse and suite ensure utility management is a breeze. The warehouse space boasts vaulted ceiling heights, creating an expansive atmosphere ideal for various uses. This brand-new construction in the North Kanaka Workspaces offers the perf

KEY INFORMATION

MLS® R2852799

Residential Attached

Websters Corners

2 Bedrooms

1 Bathroom

3,340 SF

\$324.00 Maintenance Fees

FEATURES

Year Built: 2020

Listed By: William Wright Commercial Real Estate Services

rennie