

402 8972 Fleetwood Way, Surrey

\$799,000



Welcome to Parkridge Gardens, where you'll find this stunning 2 bed + 2 bath corner unit townhome. With over 1100 sqft of living space, this home offers a spacious and open layout that is perfect for entertaining. The kitchen is a chef's dream, complete w/ S/S appliances & beautiful countertops. Large windows throughout the home allow for an abundance of natural light, creating a warm & inviting atmosphere. Recently renovated, this home boasts new kitchen appliances, washer & dryer, cabinets, countertops & fresh paint. Conveniently located to Starbucks, McDonald's, Safeway, No Frills, Shopper's Drug Mart, Tim Hortons, Meagon Anne Macdougall Park, Falcon Dog Park, Hwy 1, Fraser Hwy & much more! School catchment is Berkshire Park Elementary & Johnston Heights Secondary School. CALL NOW!

KEY INFORMATION

MLS® R2853114

Residential Attached

Fleetwood Tynehead

2 Bedrooms

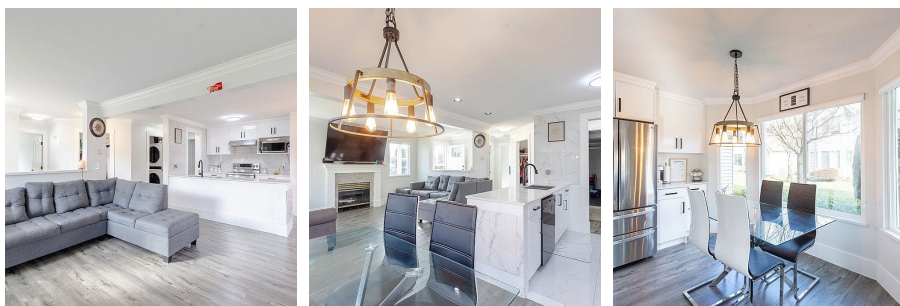
2 Bathrooms

1,135 SF

FEATURES

Year Built: 1993

Listed By: Luxmore Realty



rennie