

224 Townsend Place, New Westminster

\$1,799,000



" Unlock Your Dreams at 224 TOWNSEND PLACE! Nestled in Queens Park's beating heart, New Westminster lies a hidden gem - a pristine 7485 Sq Ft plot, rarer than unicorns! Seize the chance to craft a 3817 Sq Ft masterpiece PLUS a swanky 748 Sq Ft garage/laneway house. A tranquil cul-de-sac setting, waiting for your magic touch. Fully serviced & eager to be transformed. Your vision. Your rules. Dial into destiny. Grab this golden ticket NOW! One of the last buildable lots in Queens Park "

KEY INFORMATION

MLS® R2853730

Residential Detached

Queen's Park

0 Bedrooms

1 Bathroom

1,000 SF

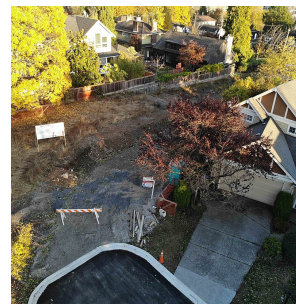
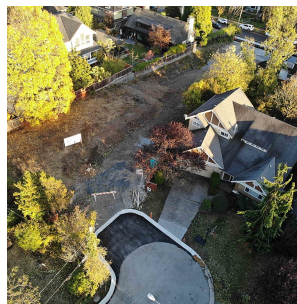
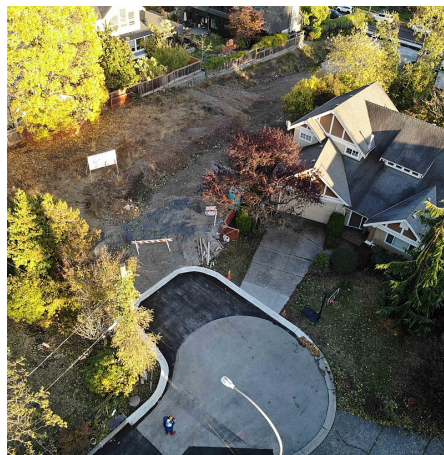
7,485 SF Lot

FEATURES

Year Built: 9999

Views: CITY

Listed By: RE/MAX Crest Realty



rennie