

1110 657 Whiting Way, Coquitlam

\$618,000



2 PARKING INCLUDED & 1 Locker! Lougheed Heights built by Bosa Properties in 2020 w/ 2-5-10 yrs warranty. Immaculate condition, North facing 1 bdrm & den w/ views. Kitchen incl stainless steel appliances, gas stove and lots of cabinets and drawers. Island counter with built-in Exten TABLE, by Bosa, which accommodates 2 to 8 ppl for your dining needs. Lvgrm w/ sleep theatre which you can slide to expose the hidden guest bed or sofa for 3 ppl. Bldg amenities w/ lots of recreational activities incl basketball court, gym workout equip, outdoor pool, sauna, bbq patio, party / games room, pool table, theatre room, music room, plus much more. 10 min walk to Lougheed Town Ctr and Skytrain stn. 5 min drive to Lougheed Hwy, Hwy#1, Costco. Close to SFU.

KEY INFORMATION

MLS® R2853299

Residential Attached

Coquitlam West

1 Bedroom

1 Bathroom

576 SF

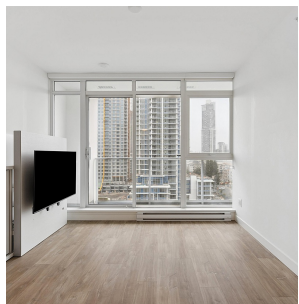
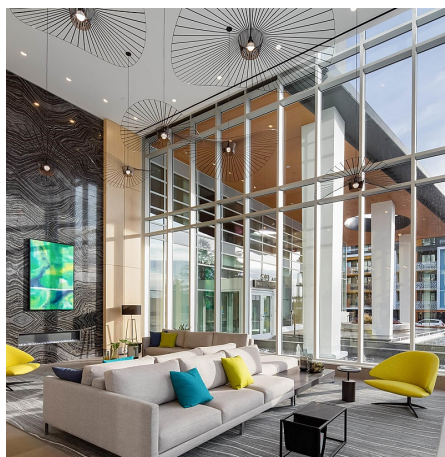
\$324.99 Maintenance Fees

FEATURES

Year Built: 2019

Views: City & Mountain View

Listed By: rennie & associates realty ltd.



Simon Lai PREC*
778.881.3603
slai@rennie.com
rennie.com/simonlai

rennie