

1605 Chippendale Road, West Vancouver

\$5,280,000



Nestled in the exclusive Canterbury Estates, this exceptional residence at 1605 Chippendale Road is a testament to comfortable luxury living. Built in 2005, this home boasts 6 bedrooms and 5 bathrooms, offering ample space for a larger family. The lower floor presents a separate section, providing endless possibilities for rental income or guest living space. Revel in stunning views of Mt. Baker, the ocean, and the city skyline from various vantage points throughout the home. Convenience meets luxury with shops, schools, and the ski hill just moments away. This central location ensures that everything you need is within easy reach. Don't miss this rare opportunity to own a truly remarkable home in one of West Vancouver's most coveted neighborhoods.

KEY INFORMATION

MLS® R2854801

Residential Detached

Canterbury

6 Bedrooms

5 Bathrooms

4,590 SF

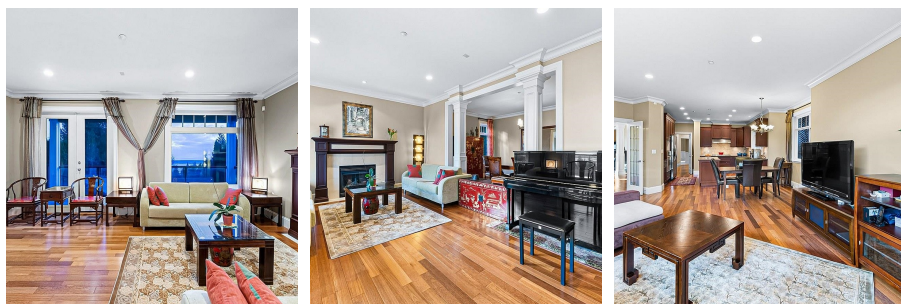
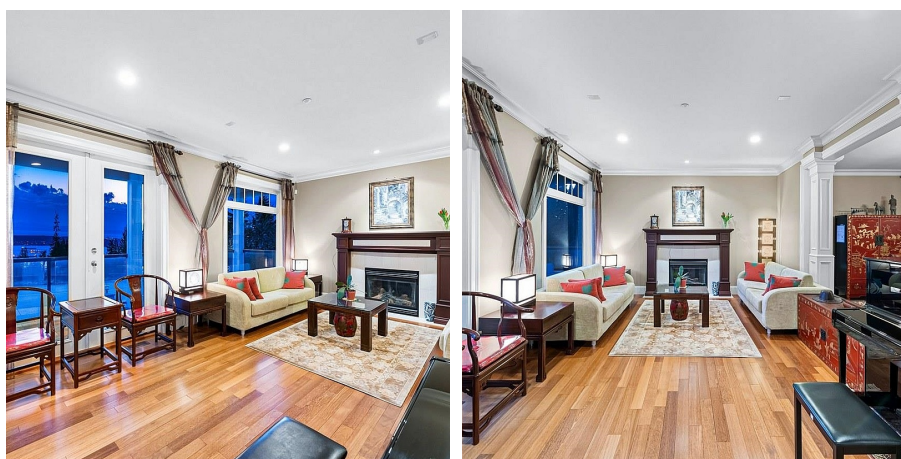
12,389 SF Lot

FEATURES

Year Built: 2005

Views: MT.BAKER, CITY & OCEAN

Listed By: Sutton Group-West Coast Realty



rennie