

3456 Gislason Avenue, Coquitlam

\$2,299,000



View! View! View! A Must-See Custom-built dream home in BURKE MOUNTAIN! This 6br/5ba house features amazing south valley view; high 10' ceilings on the main and 9' in the WALK-OUT basement and on the upper floor; Double Garage (on the main floor!); hardwood floor with radiant floor heating; spice/wok kitchen; large kitchen island with granite countertops and much more! All 4 upstairs Bedrooms have ensuite access to full bathroom and large closets. Master Bedroom has access to balcony with amazing view and features separate shower & jacuzzi jetted tub. Downstairs you will find a media room and a nicely finished 2-bedroom legal WALK-OUT basement with separate entrance as mortgage helper (\$2,200/month). No Open House: Book your showing appointment to visit! Still available!

KEY INFORMATION

MLS® R2854839

Residential Detached

Burke Mountain

6 Bedrooms

5 Bathrooms

3,916 SF

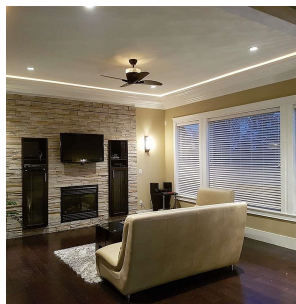
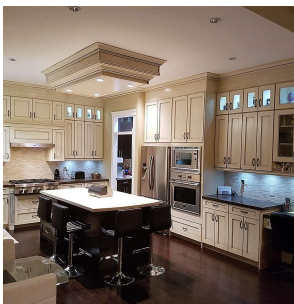
4,767 SF Lot

FEATURES

Year Built: 2012

Views: Valley & Mountain

Listed By: Nu Stream Realty Inc.



rennie