

311 B 2020 London Lane, Whistler

\$380,000



Discover the epitome of 1/4 share luxury and location at Evolution in Whistler Creekside with suite 311B, a masterfully designed, 2-bedroom, 2-bathroom suite that spans over 1008 sft. Crafted to offer an elegant and opulent living experience, it's open floorplan seamlessly blends living and entertaining, ensuring every moment is in comfort and style. Watch the 3D tour <https://rem.ax/311evolution> Renowned for its excellence, Evolution is among the Top 10 hotels in Whistler as rated by TripAdvisor, a testament to its unparalleled service and quality. A modern sanctuary that includes outdoor heated pool, 2 hot tubs, sauna, eucalyptus steam, fitness center, games room, media room, ski lockers & u/g parking. Slopeside to the Creekside Gondola. Call today.

KEY INFORMATION

MLS® R2855321

Residential Attached

Whistler Creek

2 Bedrooms

2 Bathrooms

1,008 SF

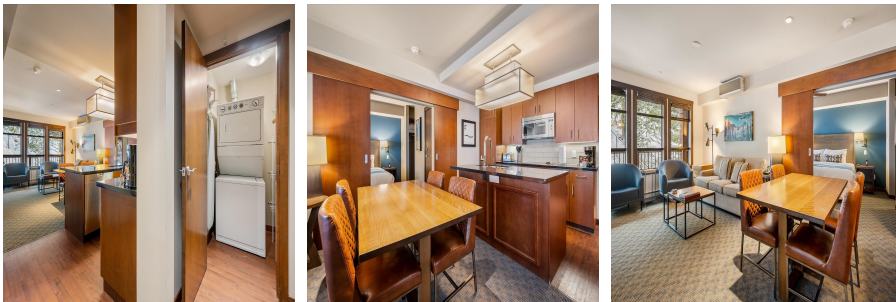
\$840.26 Maintenance Fees

FEATURES

Year Built: 2008

Views: Hot tub and Pool

Listed By: RE/MAX Sea to Sky Real Estate



rennie