

# 1616 Whitesails Drive, Bowen Island

\$1,479,000



Welcome to Whitesails, where living the west side means being witness to the best sunsets around. This gorgeous Tunstall Bay home is set back from the road, and has an open-plan main floor that leads out to an idyllic entertaining deck with stunning, panoramic views of Pasley Island and the Salish Sea beyond. Log posts flank the sides and add a unique feature to the home. Below is two bedrooms, with office nooks. The basement is unfinished – suite potential? – or could be a studio, workshop or more. Close to the bus route, and within walking distance of Tunstall Bay Beach. Ask about the possibility of membership at the Tunstall Bay Beach Club – complete with pool, mooring, kayak/paddle board storage, tennis/pickleball courts and club house.

## KEY INFORMATION

MLS® R2856229

Residential Detached

Bowen Island

2 Bedrooms

2 Bathrooms

2,264 SF

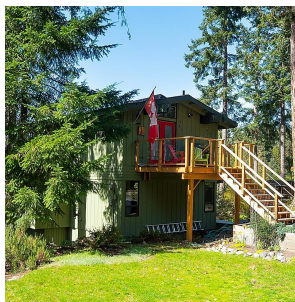
11,631 SF Lot

## FEATURES

Year Built: 1972

Views: Stunning Sunset Ocean

Listed By: Macdonald Realty



rennie