

# Lot 8 Goldstream Heights Dr, Shawnigan Lake

\$449,900



Stunning acreage in Goldstream Heights! With over 5 acres of lush forests, this remarkable property has it all. With driveway access already in place this property boasts cleared building and septic locations, and an ample water supply of 12GPM from its drilled well. The location is a mere 20-minute drive from downtown Langford, and it offers a seamless connection to Shawnigan Lake, Duncan, Mill Bay and Cobble Hill. A bonus is the easy access to the Trans Canada trail, a 38 acre park surrounding Wrigglesworth Lake. Buyers will be please to know that there's no GST to pay, and it's worth noting the Developer must approve any house plans. More information and building schemes are available. This is a great opportunity to build your dream home or recreational retreat! (id:56120)

## KEY INFORMATION

MLS® 955192

Land Only

Shawnigan Lake

0 Bedrooms

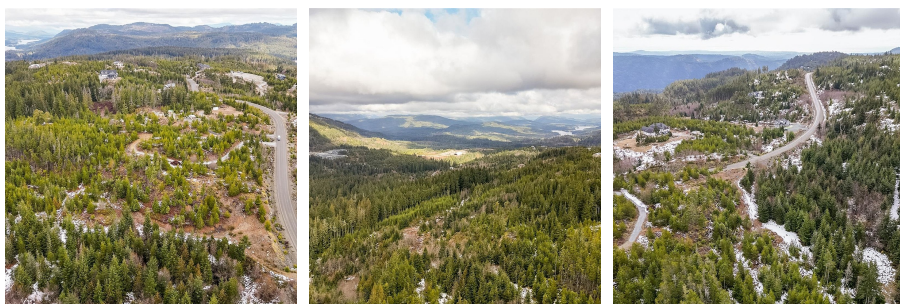
0 Bathrooms

0 SF

228,254 SF Lot

## FEATURES

Listed By: RE/MAX Camosun



rennie