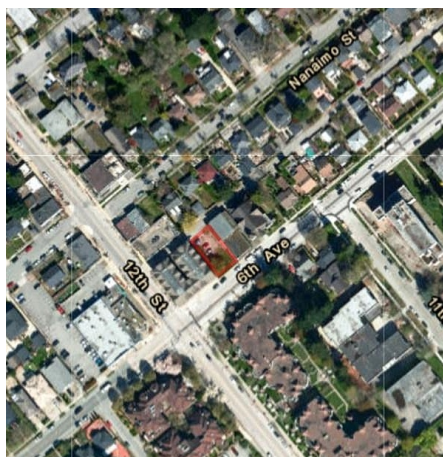


# 1113 Sixth Avenue, New Westminster

\$1,599,000



This Rarely Found Single Lot in Moody Park Sub-area in Central New Westminster has 4390 sqft. C-2A Community Commercial Districts (Medium Rise) allows mixed-use development consisting of pedestrian-oriented commercial businesses and two storeys of residential development above. Newly passed BC Legislation may bring new angles to this lot as well and it is up to the investors to check with different authorities. Steps away from Moody Park and near Douglas College. Easily connecting with three major cities including Richmond, Burnaby, and Surrey. Call for information Package that includes the brochure.

## KEY INFORMATION

MLS® R2854519

Land Only

Moody Park

0 Bedrooms

0 Bathrooms

0 SF

4,390 SF Lot

## FEATURES

Listed By: RE/MAX Westcoast