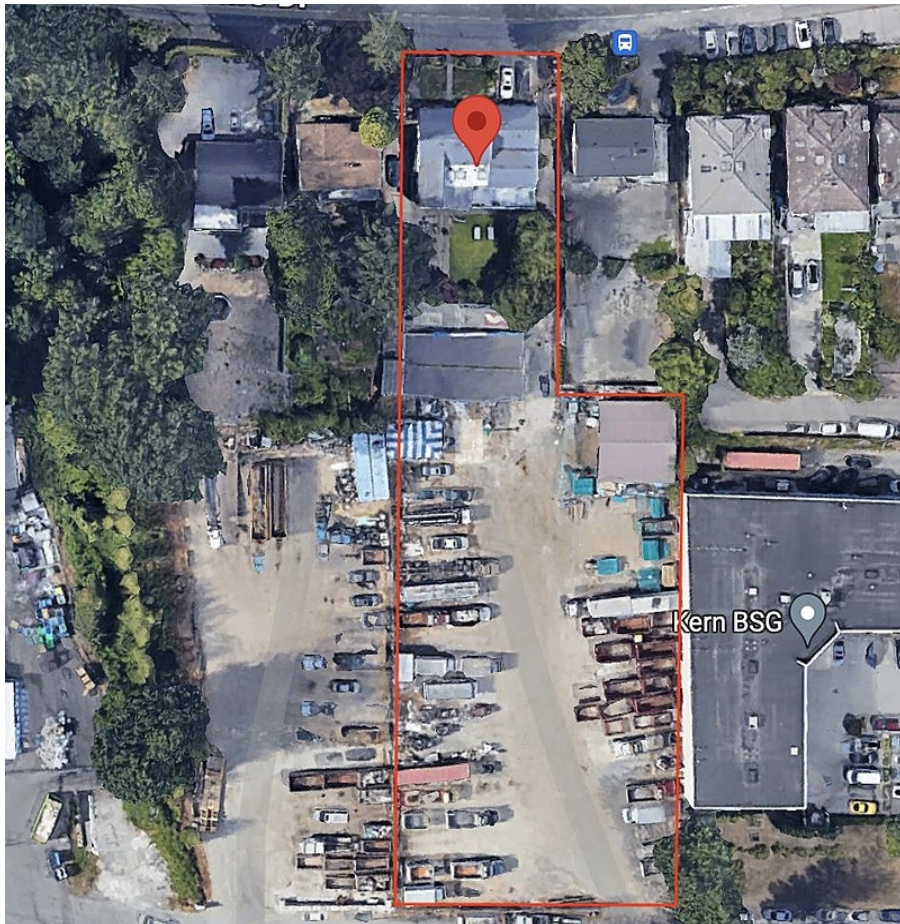


# 3822 Marine Drive, Burnaby

\$14,000,000



Discover the potential of this extraordinary 1.38-acre parcel in Burnaby, offering a unique blend of residential and commercial zoning. The property boasts a strategic location, with a portion of the lot designated as R2 zoning, presenting an ideal canvas for residential development. The R2-zoned portion has tremendous potential for a land assembly project or standalone residential development. This commercial space offers an excellent commercial opportunity. Whether you're considering a comprehensive land assembly or wish to create a bespoke residential project, this property is a blank canvas awaiting your vision.

## KEY INFORMATION

MLS® R2856641

Residential Detached

Big Bend

7 Bedrooms

4 Bathrooms

4,918 SF

60,112 SF Lot

## FEATURES

Year Built: 1950

Listed By: Behroyan & Associates Real Estate Services

