

# 10671 Aintree Crescent, Richmond

\$1,650,000



Re1 ZONED. 2,788 sq? updated 2-level family home (2003), 6 bedrooms, 4 full baths, on a tree-lined street in a family oriented neighborhood 7,402 sq? (69? x 107?) lot with back lane. No big trees. Big wrap around balcony. Laminate & tiled flooring. Bright & spacious and lots of storage. Total 4 units in this property, one unit with 3brdrm upstairs, 3 more one bedroom unit downstairs, each unit with separate entrance. All MTM tenancy. rent out as great investment or build your dream home including GRANNY SUITE or COACH HOUSE.

## KEY INFORMATION

MLS® R2856867

Residential Detached

Mc Nair

6 Bedrooms

4 Bathrooms

2,788 SF

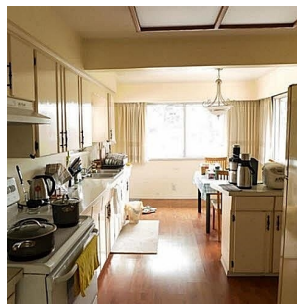
7,402 SF Lot



## FEATURES

Year Built: 1959

Listed By: Pacific Evergreen Realty Ltd.



rennie