

# 20619 123 Avenue, Maple Ridge

\$1,698,000



Discover Shantz Way a new neighborhood coming soon on the border of Pitt Meadows and Maple Ridge. This custom-built community offers seven modern farmhouse homes with high-end finishes & unique design. Enjoy large backyards with covered decks and customizable upgrades. Inside, find spacious kitchens with ample storage & top-of-the-line appliances. Main floors feature laundry rooms, gas fireplaces, powder rooms, & large entryways. Upstairs, master bedrooms have beautifully designed ensuites with stand-alone tubs and sizable showers. Conveniently located near Golden Ears, schools, Westcoast Express, & more. Customize your home with appliance packages and color schemes. Framed home avlb to view

## KEY INFORMATION

MLS® R2857020

Residential Detached

Northwest Maple Ridge

4 Bedrooms

4 Bathrooms

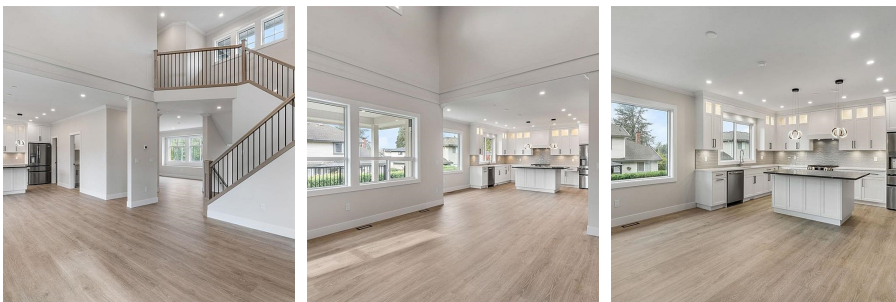
2,238 SF

5,997 SF Lot

## FEATURES

Year Built: 2023

Listed By: Stonehaus Realty Corp.



rennie