

4 6300 London Road, Richmond

\$909,000



Welcome to your new home in the prestigious McKinney Crossing community, located in beautiful Richmond. This meticulously designed 2 bedrooms, 2.5 bathrooms unit offers an unparalleled blend of comfort, style, and convenience. The thoughtfully designed layout offers ample space for relaxation and entertaining, while the bedrooms provide privacy and comfort. The unit's orientation is a true treasure, as it faces the awe-inspiring beauty of the mountains and picturesque farmland to the North. Embrace the serenity of Northern exposure and immerse yourself in the natural beauty that surrounds you. One of the standout features of this property is the rare inclusion of two parking stalls, ensuring you will always have convenient parking options.

KEY INFORMATION

MLS® R2857591

Residential Attached

Steveston South

2 Bedrooms

3 Bathrooms

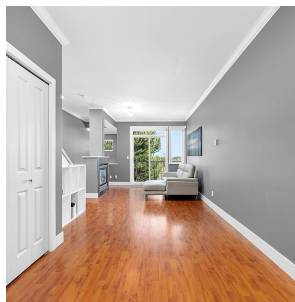
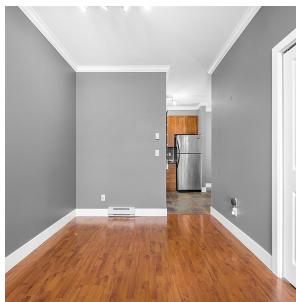
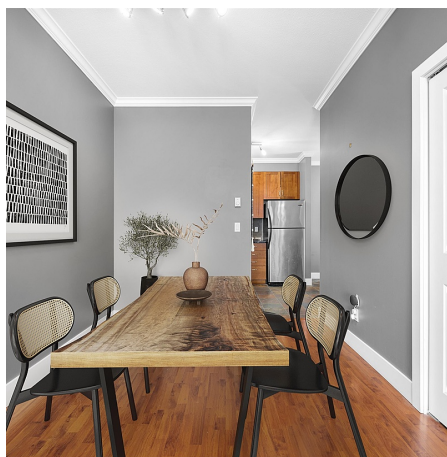
1,215 SF

FEATURES

Year Built: 2004

Views: Mountain and Farmland

Listed By: Sotheby's International Realty Canada



rennie