

19484 Park Road, Pitt Meadows

\$1,375,000



Welcome to one of the most desirable neighborhoods in Pitt Meadows – Somerset! This 5 Bedroom home is a must-see with lots to offer! Features include NEW Roof (2016), NEW Furnace & AIR CONDITIONING (2022), Updated Kitchen with Caesar Stone Quartz Counters, S/S Appliances, NEW Carpet, Newer Flooring, Newer Fencing, Gas Fireplace & more! Upstairs featured 4 Large Bedrooms including your Master Bedroom with large ensuite & walk-in closet! Other features include a full 4-5' Crawl Space, Roughed-in Central vac., Ceiling Fans, Large Driveway & Large Flat Fully Fenced SOUTH Facing backyard! All of this located in the heart of Pitt Meadows on the North side of the tracks, just moments away from the Golden Ears Bridge, Harris Road Park, Somerset Park & steps away from Edith McDermott Elementary!

KEY INFORMATION

MLS® R2857740

Residential Detached

Mid Meadows

5 Bedrooms

3 Bathrooms

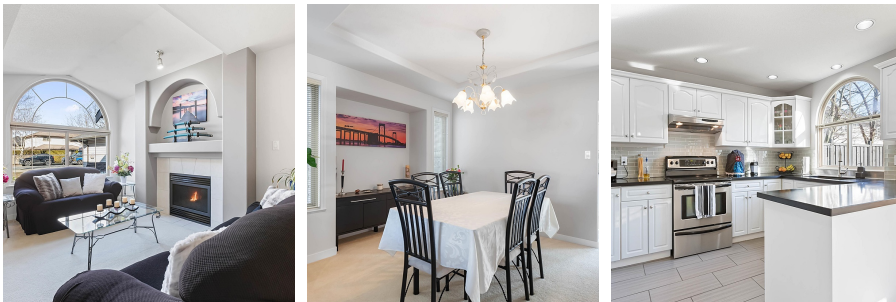
2,335 SF

4,854 SF Lot

FEATURES

Year Built: 1996

Listed By: Stonehaus Realty Corp.



rennie