

3332 Epson Court, Abbotsford

\$1,069,000



East Abby Gem, great street appeal, located on a fantastic family friendly Cul-de-Sac. 4 Bedrooms, 3 Baths. Large fully fenced backyard, perfect for letting the kids play, entertaining or BBQing on Sundeck off kitchen. Separate fenced Dog run. Many upgrades include; Newer Roof & Gutters (2022), New Superior Garage Door, Newer Furnace with A/C, Newer Sliding glass door to Sundeck, Exterior of house painted plus shutters added, Newer Stove, exterior panel for pool heater or Hot Tub, etc.. Downstairs is setup for a 1 bedroom suite with separate entrance. RV or Boat parking. Close to schools, parks, Highway.

KEY INFORMATION

MLS® R2857851

Residential Detached

Abbotsford East

4 Bedrooms

3 Bathrooms

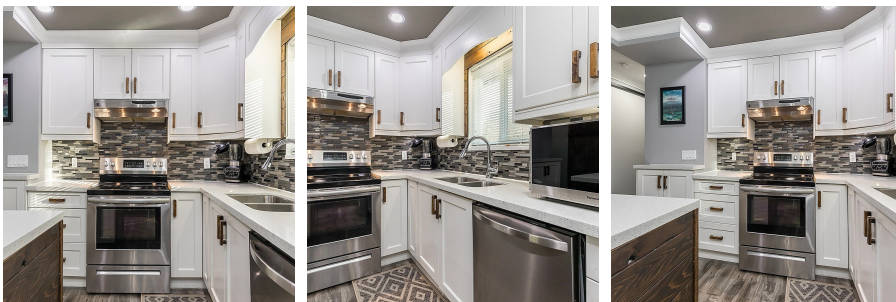
1,788 SF

8,160 SF Lot

FEATURES

Year Built: 1980

Listed By: Royal LePage West Real Estate Services



rennie