

5020 Blundell Road, Richmond

\$2,680,000



Corner lot! Near Blundell shopping mall. South facing rear yard, huge master bedroom, all other three bedrooms are all ensuited. School catchment: McKay Elementary and Burnett Secondary. Potential townhouse zoning or good lot for build 4 units later. Buyer verify with the city.

KEY INFORMATION

MLS® R2858002

Residential Detached

Lackner

3 Bedrooms

5 Bathrooms

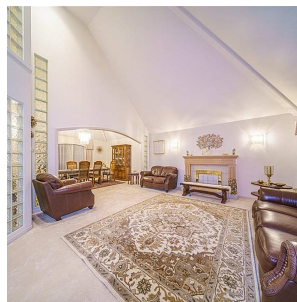
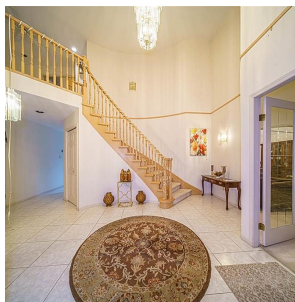
4,146 SF

9,616 SF Lot

FEATURES

Year Built: 1992

Listed By: LeHomes Realty Premier



rennie