

304 5535 Hastings Street, Burnaby

\$1,299,000



Alto, a project by Vivid Green Architecture, is set to be erected on Capitol Hill in Burnaby, precisely located at the intersection of Hastings Street and Ellesmere Avenue. This development will consist of a 4-storey wood-frame low-rise structure sitting atop two levels of parking. It will offer a total of 20 luxury condominiums, along with 11 live-work units and 5 commercial retail spaces. The residential units will come in various configurations, ranging from studios to 1, 2, and 3-bedroom layouts, spanning between 828 and 1,170 square feet. Residents will have access to shared amenities including a meeting room and a landscaped rooftop deck furnished with lounge seating. Situated in a family-friendly neighborhood.

KEY INFORMATION

MLS® R2857500

Residential Attached

Capitol Hill

3 Bedrooms

2 Bathrooms

1,132 SF

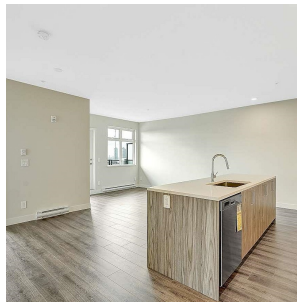
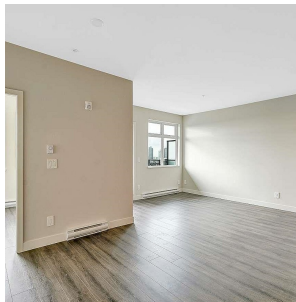
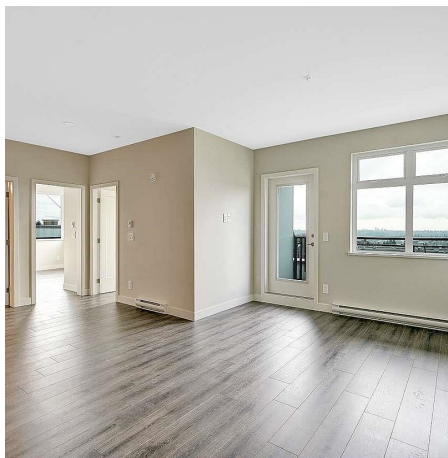
\$331.19 Maintenance Fees

FEATURES

Year Built: 2024

Views: Mountains

Listed By: Century 21 Coastal Realty Ltd.



rennie