

902 683 W Victoria Park, North Vancouver

\$765,000



Great outlook! Directly overlooking Victoria Park with views of North Shore Mountains and Burrard Inlet!! East exposure and well maintained 1 Bedroom, 1.5 Bathroom suite in Mira on the Park!!! This unit features a large open kitchen with gas cook top, granite counters, stainless steel appliances and a generous island, as well as electric fireplace, H/W floors, newer in suite laundry/lighting fixtures, and a large covered balcony. Just steps to Lower Lonsdale restaurants, Lonsdale Quay, Shipyards and the SeaBus. One secured underground parking stall and storage locker. Amenities include concierge, large meeting room, and exercise room. Two cats or one cat and one dog(up to 50lbs) allowed, and rentals allowed(minimum 60 days). Open house, Saturday April 20, 2-4pm.

KEY INFORMATION

MLS® R2858188

Residential Attached

Lower Lonsdale

1 Bedroom

2 Bathrooms

622 SF

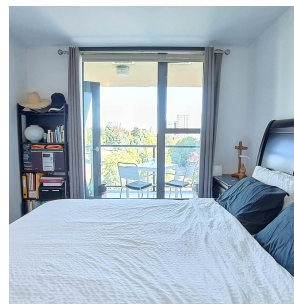
\$400.78 Maintenance Fees

FEATURES

Year Built: 2008

Views: Victoria Park & Burrard Inlet

Listed By: Sunstar Realty Ltd.



rennie