

1503 8288 Granville Avenue, Richmond

\$638,000



Harmony by Townline & Peterson Group - a sophisticated collection concrete high rise in the highly sought after and amenity rich Central Richmond. Very close to Richmond center, parks, shopping and sky train. This unit is facing South with fantastic city and garden view. It's almost brand new and extremely well kept. Features include full time concierge(12 hrs a day), social lounge and an amazing 15000 sqft court yard. This gorgeous south facing unit offers an efficient layout and fully equipped with all S/S appliances, laminated floorings, quartz counters and full back splash. It comes with one parking stall and one storage locker. Perfect for move-in of investment. Showing by appointment.

KEY INFORMATION

MLS® R2858208

Residential Attached

Brighthouse South

1 Bedroom

1 Bathroom

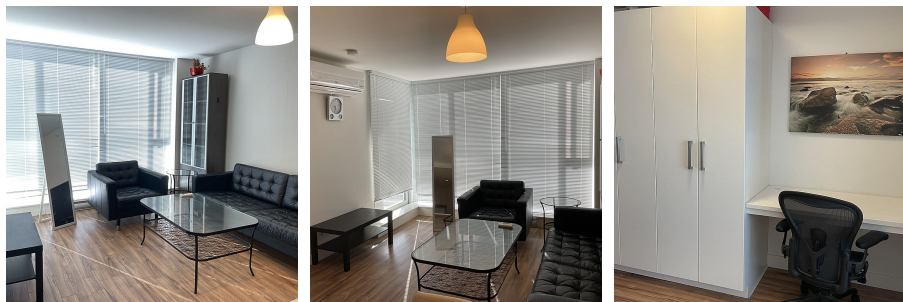
525 SF

\$315.73 Maintenance Fees

FEATURES

Year Built: 2015

Listed By: Royal Pacific Realty Corp.



rennie