

1005 958 Ridgeway Avenue, Coquitlam

\$669,900



SLEEK CITY LIVING, AT A SUBURBAN PRICE! Perched at the peak of Austin Heights, The Austin by Beedie Group towers above with panoramic views & exquisite finishing. Inside this spacious & bright open concept 2BR unit you'll find home feels like floor to ceiling windows & designer colors. Elegant Two tone kitchen w/ quartz counters & modern cabinetry, facing the Northern view! Enjoy hot Summer nights on a covered patio w/ access off primary. Investor? Bring in \$2,500+ per month! 1 pkg + 1 locker included! FULLY LOADED: Guest suite, gym, yoga room, private outdoor garden space & party/ lounge room! PRIME location, short walk to Blue Mtn Park, renowned Vancouver Golf Club, groceries, café's & stores on Austin strip. Close to Skytrain, HWY #1 & Lougheed Mall! OPEN HOUSE - Sat. April 27, 3 - 4pm!

KEY INFORMATION

MLS® R2858461

Residential Attached

Central Coquitlam

2 Bedrooms

1 Bathroom

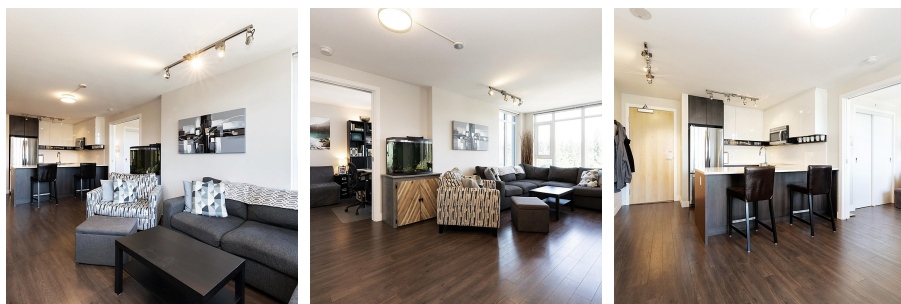
749 SF

\$442.99 Maintenance Fees

FEATURES

Year Built: 2014

Listed By: Royal LePage Sterling Realty



rennie