

12323 248 Street, Maple Ridge

\$5,800,000



POTENTIAL FUTURE DEVELOPMENT OPPORTUNITY! PLEASE CALL AND ASK FOR DETAILS! Horse Lover's Dream. Picture Perfect level 10.08 Acre Horse or Hobby Farm property close to town on CITY WATER & SEWER! Truly unique opportunity to enjoy country living at it's finest from the old fashioned covered sitting porch of the 5 beds country character home built circa 1920 which boasts the original Fir floors, lrg covered deck overlooking prime pasture land, 36x30 detached shop, 2 stall barn w/ heated tack room & paddock, chicken coop, custom door & window casings, 8in baseboards, 24ft diameter above ground pool w/ loads of decking, newer fixtures, 9ft ceilings on main floor, updated kitchen w/ custom tile backsplash, country style cabinetry & more.

KEY INFORMATION

MLS® R2858043

Residential Detached

Websters Corners

5 Bedrooms

1 Bathroom

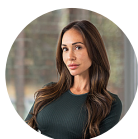
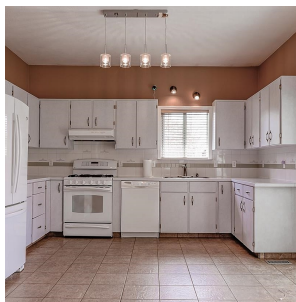
3,249 SF

439,084 SF Lot

FEATURES

Year Built: 1920

Listed By: rennie & associates realty ltd.



Angela Kabakov

604.781.3150

akabakov@rennie.com

rennie.com/angelakabakov

rennie