

# 31433 King Road, Abbotsford

\$9,898,000



4 Acres designated in special study area B. Located next to Industrial zoning. 2.5 acres of glass greenhouse with 6400 sqft of warehouse with a loading dock, office and employees lunch room. 2,400 sqft house with 4 Bedrooms and 2 Bathrooms. Easy access to Hwy 1, Fraser Hwy, US border crossing.

## KEY INFORMATION

MLS® R2858281

Residential Detached

Poplar

4 Bedrooms

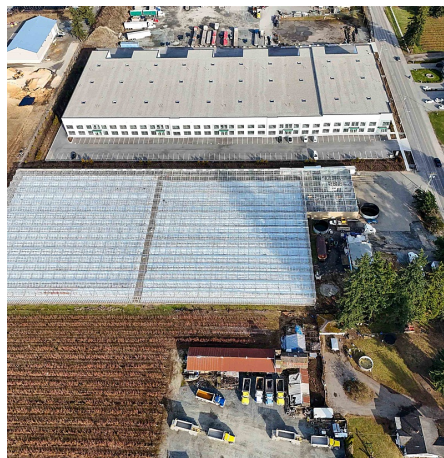
2 Bathrooms

2,492 SF

## FEATURES

Year Built: 1966

Listed By: B.C. Farm & Ranch Realty Corp.



rennie