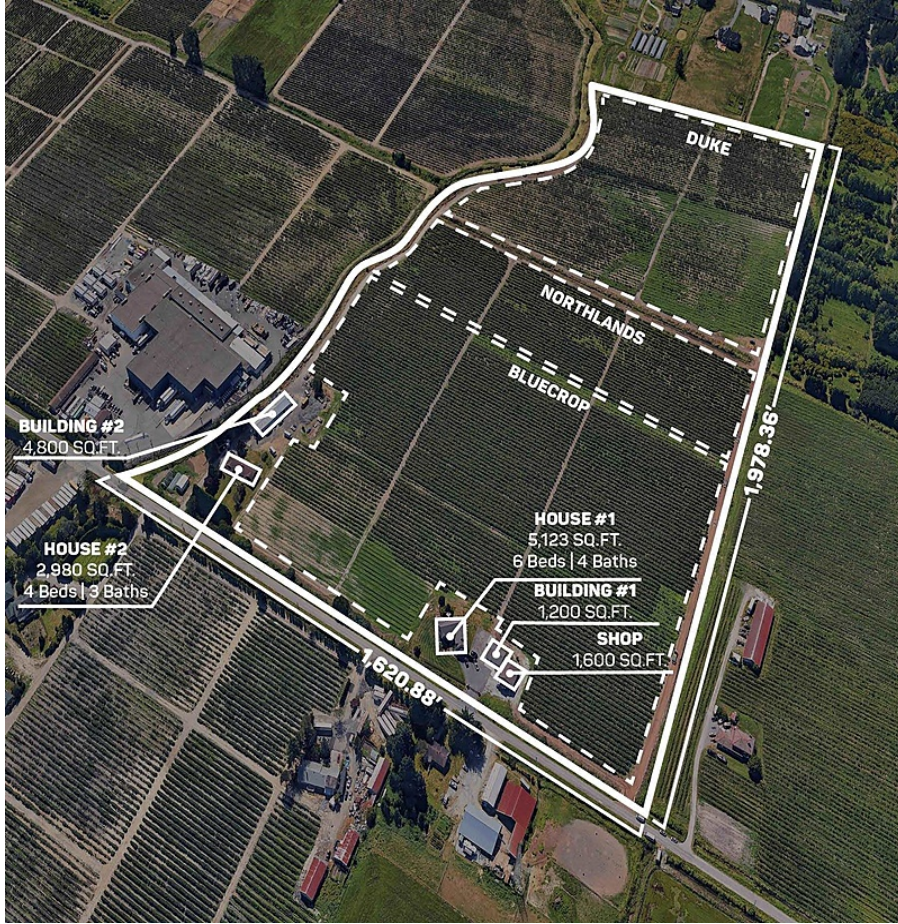


# 13795 Hale Road, Pitt Meadows

\$5,985,000



46.68 ACRES 2 HOUSES AND BLUEBERRY FARM. The main home is 5,123 SQ/FT built in 1997 and includes 6 spacious bedrooms and 4 Bathrooms. Has a 1,200 SQ/FT Storage Building and a 1,600 SQ/FT Shop. The fully renovated second house is 2,980 SQ/FT with 4 bedrooms and 3 bathrooms and has a large 4,800 SQ/FT Building/ Workshop. Total of 40 Acres are planted in 3 varieties of blueberries, Duke, Bluecrop and Northlands producing approx. 350,000 LBS annually. Easy Access to Golden Ears Way, Lougheed Highway and Highway #1. This is a great location, close to all amenities with beautiful surrounding mountain & valley views.

## KEY INFORMATION

MLS® R2858913

Residential Detached

North Meadows

6 Bedrooms

5 Bathrooms

5,123 SF

## FEATURES

Year Built: 1997

Views: Mountain and Valley

Listed By: eXp Realty (Branch)



rennie