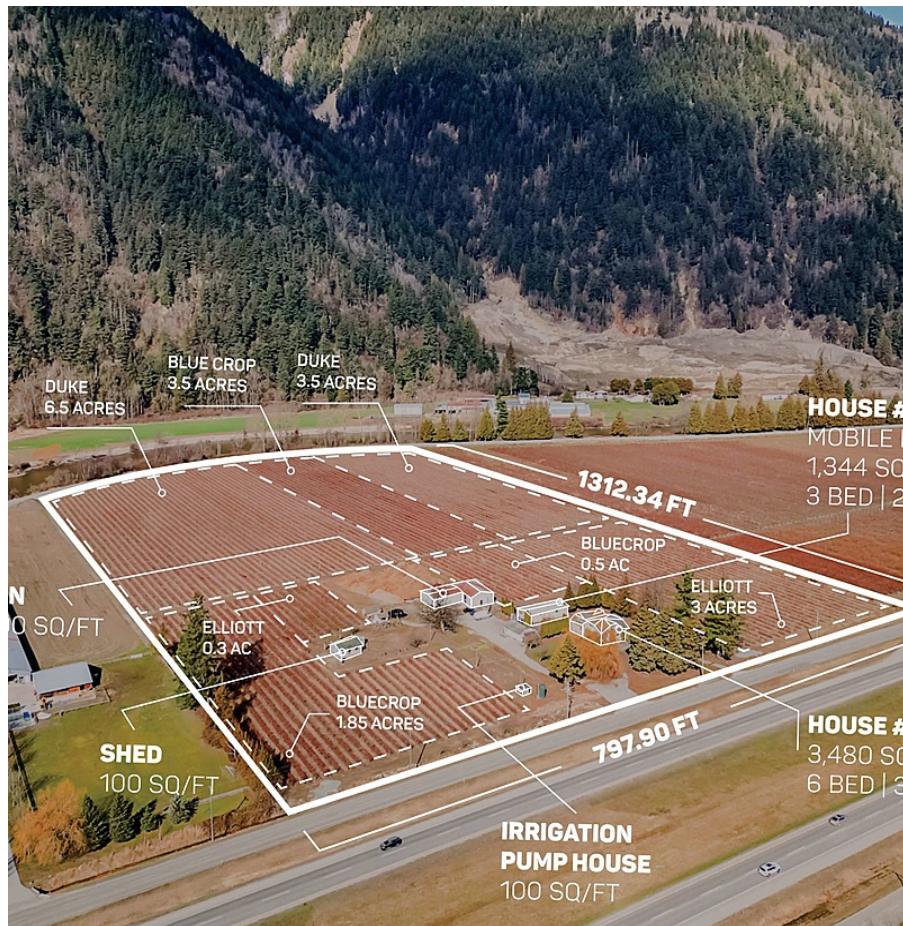


39963 North Parallel Road, Abbotsford

\$3,450,000



22.71 ACRE BLUEBERRY FARM +2 HOMES AND OUTBUILDINGS! Beautiful location to build your dream estate with farm income in Abbotsford. Includes 3,480 sqft home (6bed/3bath), 1,344 sqft mobile home (3bed/2bath), 3,000 sqft barn, 2x storage sheds, and Irrigation Pumphouse. Mature blueberry planted on 19.15 Acres- varieties: Duke 10 Acres (2008), Bluecrop 5.85 Acres (2012), Elliot 3.3 Acres (2012). Fully setup for machine harvesting and drip irrigation (4 zones), all machinery and sawdust on property is included! Property has City Water, Natural gas, and is located minutes away from Highway #1, Costco, USA Border, and the University of the Fraser Valley. Showings by appointment only.

KEY INFORMATION

MLS® R2859037

Residential Detached

Sumas Mountain

4 Bedrooms

2 Bathrooms

3,480 SF

FEATURES

Year Built: 1933

Views: MOUNTAINS AND VALLEY

Listed By: eXp Realty (Branch)

