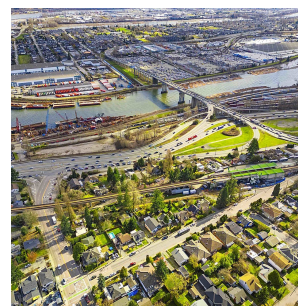
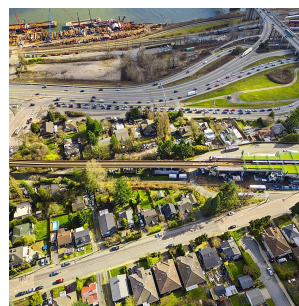
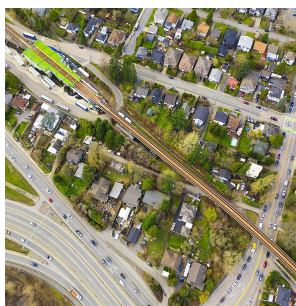
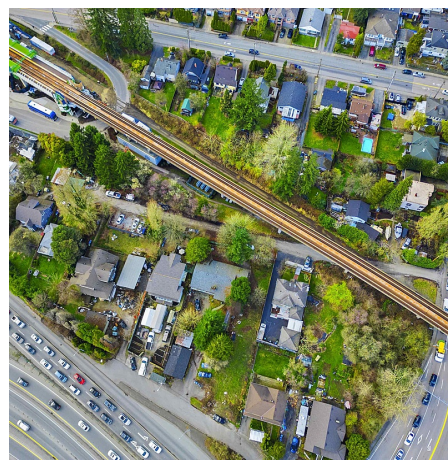
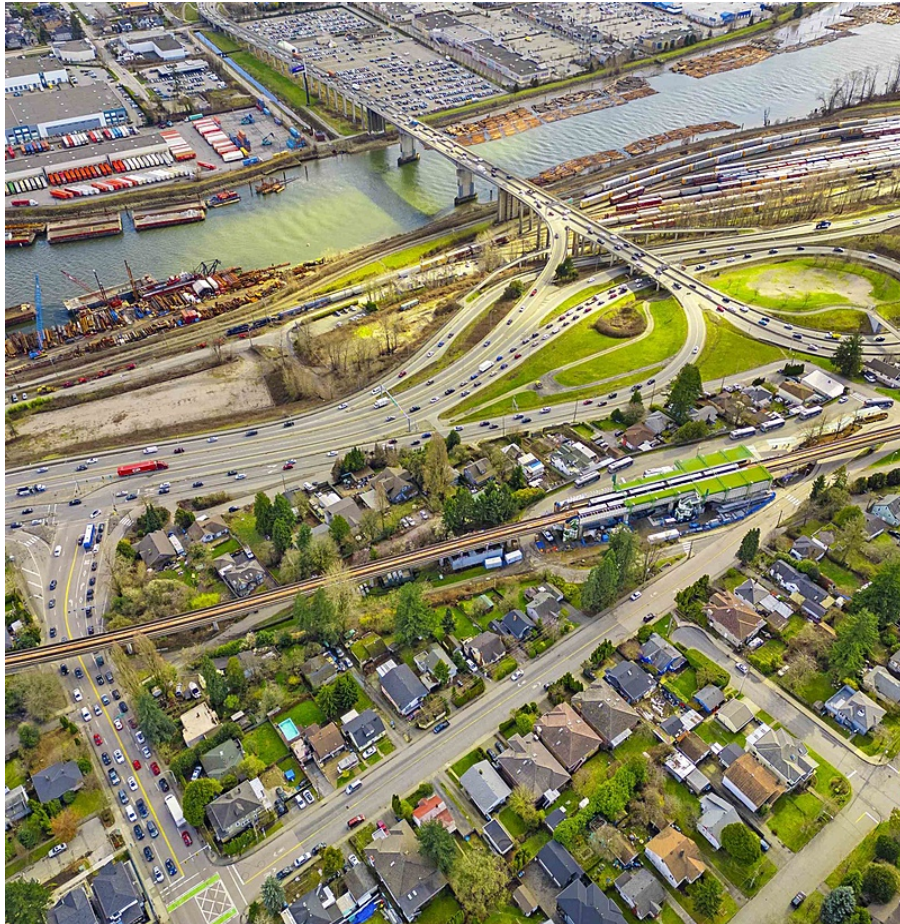


2006 Seventh Avenue, New Westminster

\$3,148,800



Developer & Investor Alerts - Land Assembly – An incredible opportunity awaits you in New Westminster! Transit-Oriented investment opportunity in a prime location adjacent to 22nd street skytrain Station. Recently announced, Bill 47 (Transit-Oriented Areas) will designate the subject properties for a condo tower at a minimum height of 20 storeys and minimum density of 5 FSR. This prime location presents a collection of 32 houses and can be sold on small group of homes. List price is per house. Situated just steps away from the Skytrain station, this property offers unparalleled convenience for future residents. Permission required to walk on property. Buyer to verify the OCP and City of New Westminster for zoning and all inquiries.

KEY INFORMATION

MLS® R2859112

Residential Detached

Connaught Heights

3 Bedrooms

1 Bathroom

1,598 SF

5,250 SF Lot

FEATURES

Year Built: 1952

Listed By: eXp Realty

rennie