

8880 Harvie Road, Surrey

\$1,588,000



Price includes GST! Over 32,000 sqft lot ready to build your dream home. Building plans are available for a 8500 sqft mansion. Zoning is RA-one acre residential. Great potential in a growing Port Kells neighborhood with high end homes nearby. Prime location nearby highway 1, 15, 17 & 200 Street Langley Golden Ears Bridge with a good truck route. Don't miss this great opportunity!

KEY INFORMATION

MLS® R2859078

Land Only

Port Kells

o Bedrooms

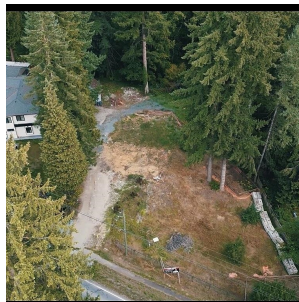
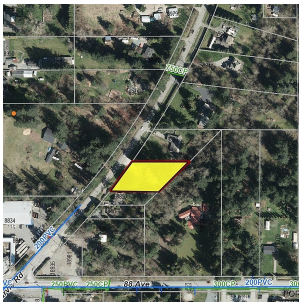
o Bathrooms

o SF

32,757 SF Lot

FEATURES

Listed By: Nationwide Realty Corp.



rennie