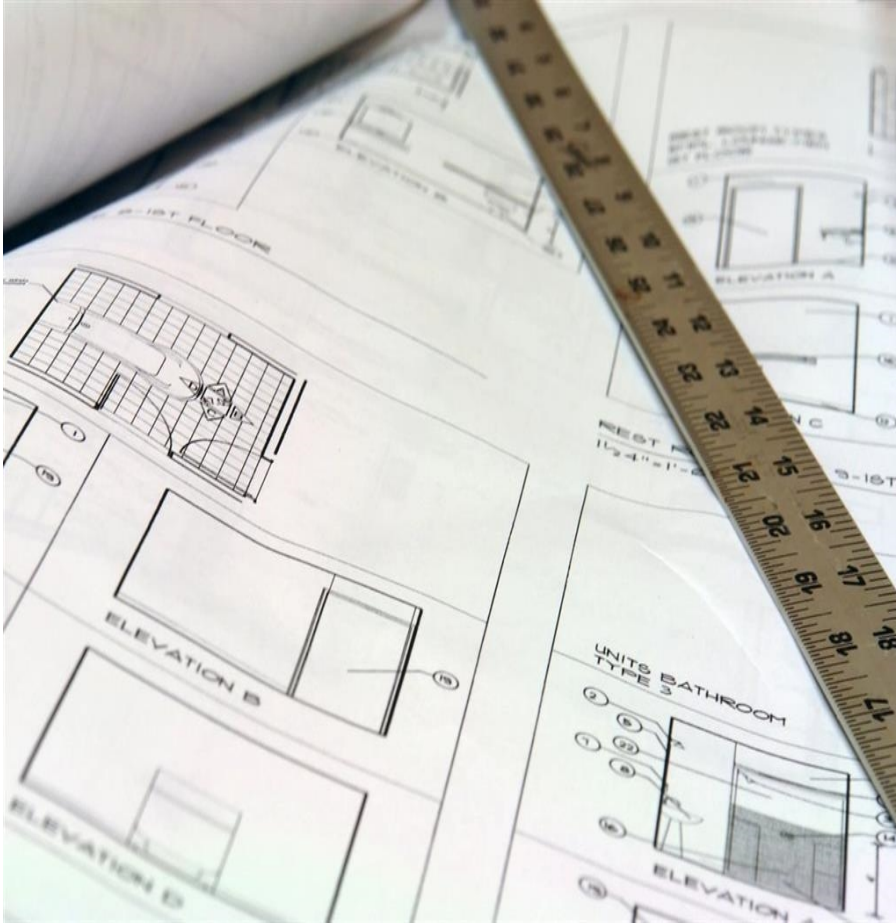


16673 16 Avenue, Surrey

\$879,000



Opportunity to build your dream home on this expansive half-duplex lot located in the coveted South Surrey area! This generously sized lot can accommodate a 3-story home spanning approx 2800 sqft complete w/single car garage, & additional parking, all w/convenient lane access. The serviced lot is scheduled to be ready around April 2024, allowing you to start planning your dream home construction soon. The building plans are ready and have been submitted to the city, saving you time & hassle in the approval process. Take advantage of this prime location close to all amenities, schools, shopping + recreational facilities that South Surrey has to offer. Don't miss out on this fantastic opportunity to create the home you've always envisioned. GST Applicable Contact us today for more information!

KEY INFORMATION

MLS® R2859502

Land Only

Pacific Douglas

0 Bedrooms

0 Bathrooms

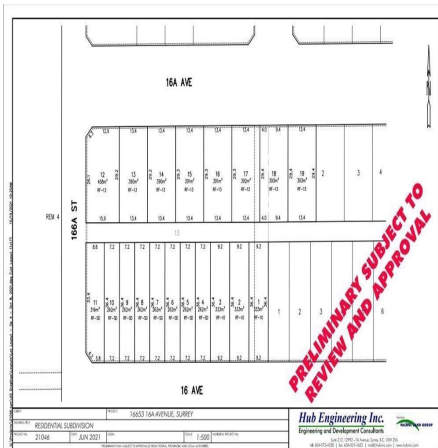
0 SF

2,819 SF Lot

FEATURES

Views: Some Mtn views from new build

Listed By: Sutton Group-West Coast Realty



PRELIMINARY SUBJECT TO REVIEW AND APPROVAL

Hub Engineering Inc.
Engineering and Development Consultants