

# 1645 Depot Road, Squamish

\$1,850,000



This spacious home is located in the Brackendale area. Boasting over 4300 sq ft of living space and top-notch finishes, this property offers ample room for a large family with its 6 bedrooms and 7 bathrooms. Additionally, there is potential to create a revenue suite if extra space is not needed. Some notable features of this property include a recently updated kitchen, private backyard, central vacuum system, tile roof, large storage shed, crown molding, radiant floors, a jacuzzi tub, a beautiful chandelier, and a natural gas fireplace. Situated in an ideal location, it is only a 30-minute drive to Whistler and 45- min to West Vancouver.

## KEY INFORMATION

MLS® R2860541

Residential Attached

Brackendale

8 Bedrooms

7 Bathrooms

4,350 SF

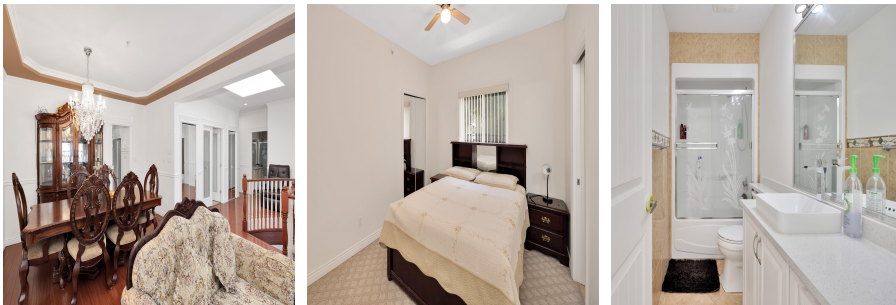
15,643 SF Lot

## FEATURES

Year Built: 2005

Views: Mountains

Listed By: rennie & associates realty ltd.



**Shawn Wentworth** PREC\*

604.379.6731

swentworth@rennie.com

rennie.com/shawnwentworth

**rennie**