

1645 Depot Road, Squamish

\$1,850,000



This spacious home is ideally located in the Brackendale with easy access to the highway with over 4300 sq ft of living space. With ample room for a large family with 4 bedrooms and 5 bathrooms. Featuring a recently updated kitchen, private backyard, tile roof, large storage shed, crown molding, radiant floors, a jacuzzi tub, central vacuum system, and a natural gas fireplace. With 2 separate 2 bedroom suites for income, and only a 30-minute drive to Whistler/ 45- min to West Vancouver you wont want to miss this opportunity, call for private viewing.

KEY INFORMATION

MLS® R2860541

Residential Attached

Brackendale

8 Bedrooms

7 Bathrooms

4,350 SF

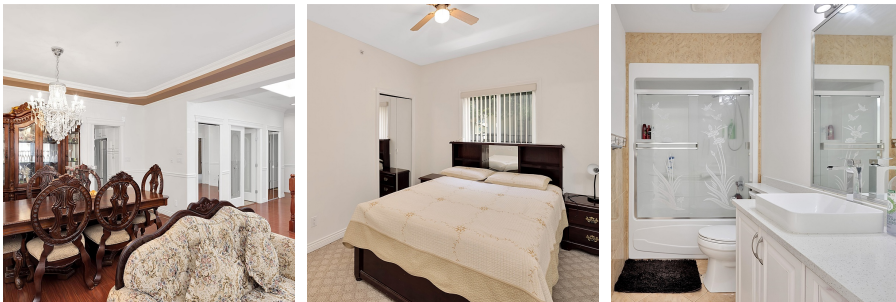
15,643 SF Lot

FEATURES

Year Built: 2005

Views: Mountains

Listed By: rennie & associates realty ltd.



Shawn Wentworth PREC*

604.379.6731

swentworth@rennie.com

rennie.com/shawnwentworth

rennie