

9199 Emerald Drive, Whistler

\$2,699,000



This bright spacious home is a rare find with the main living area opening onto a large patio and huge flat yard. Host a dinner party on your private patio or play a game of soccer or croquet on your enviable green grass. The primary bedroom is very private, taking up the whole top floor, with vaulted ceilings overlooking the backyard and Wedge and Armchair Mountains. The double car garage and large storage area provides ample room for all your toys. Just a short walk to Green Lake and the valley trail makes this a great location for swimming, paddle boarding and biking in the summer or skating and cross-country skiing in the winter. Just an 8-minute drive to both Gondolas and Whistler Village makes this a perfect family home or recreational property in the Summer and the Winter!

KEY INFORMATION

MLS® R2860657

Residential Detached

Emerald Estates

3 Bedrooms

3 Bathrooms

2,417 SF

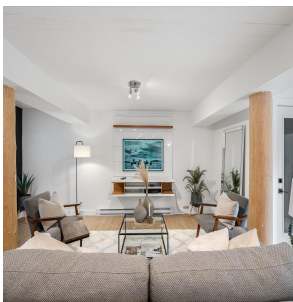
10,208 SF Lot

FEATURES

Year Built: 1981

Views: Mountains and Green Lake

Listed By: Stilhavn Real Estate Services



rennie